

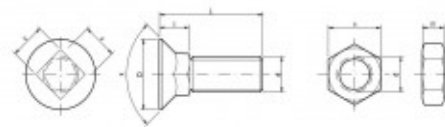
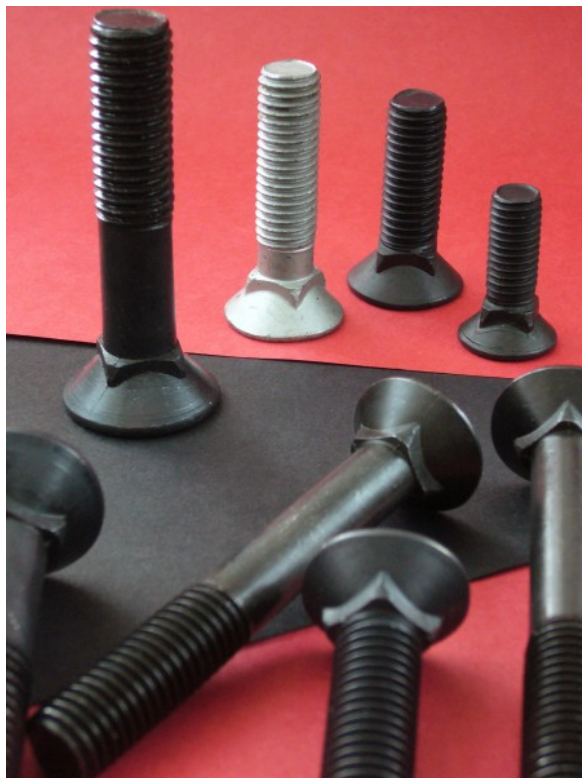
DIN 608 (4.8, 5.8)

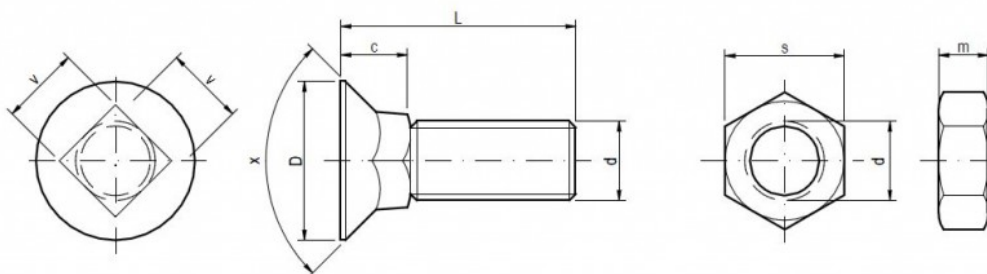
Plough bolts with square neck with nuts DIN 934 (8.8)

THE MOST PARTICULAR USE

The bolts to machinery of LEMKEN

The most often used code OEM LEMKEN 3015785 12 x 35





Specifications

d	c	D	x	v	s	m
M 10	8,00	19,00	90°	10,00	17,00	8,00
M 12	10,50	24,00	90°	12,00	19,00	10,00
M 14	11,00	28,00	90°	14,00	22,00	11,00

The bolts DIN 608 do fit to machinery of OEM LEMKEN, ÖVERUM, PÖTTINGER, LANDSBERG, KVERNELAND, NIEMEYER, RABE, OVLAC, KÖCKERLING, FARMET, BEDNAR, ROSS, PHX, UNIA GRUDZIADZ, OPALL AGRI and many others.

Packaging

Packed in boxes / pcs		Packaging without nuts	Packaging with nuts
10 x 25	DIN 608 (4.8, 5.8)	200	150/150
10 x 30	DIN 608 (4.8, 5.8)	150	100/100
10 x 35	DIN 608 (4.8, 5.8)	150	100/100
10 x 40	DIN 608 (4.8, 5.8)	100	100/100
10 x 45	DIN 608 (4.8, 5.8)	100	50/50
10 x 50	DIN 608 (4.8, 5.8)	100	50/50
10 x 55	DIN 608 (4.8, 5.8)	100	50/50

10 x 60	DIN 608 (4.8, 5.8)	150	100/100
10 x 65	DIN 608 (4.8, 5.8)	150	100/100
10 x 70	DIN 608 (4.8, 5.8)	150	100/100
10 x 75	DIN 608 (4.8, 5.8)	100	100/100
10 x 80	DIN 608 (4.8, 5.8)	100	50/50
10 x 90	DIN 608 (4.8, 5.8)	80	50/50
10 x 100	DIN 608 (4.8, 5.8)	80	50/50
12 x 30	DIN 608 (4.8, 5.8)	100	50/50
12 x 35	DIN 608 (4.8, 5.8)	100	50/50
12 x 40	DIN 608 (4.8, 5.8)	150	100/100
12 x 45	DIN 608 (4.8, 5.8)	150	100/100
12 x 50	DIN 608 (4.8, 5.8)	100	100/100
12 x 55	DIN 608 (4.8, 5.8)	100	50/50
12 x 60	DIN 608 (4.8, 5.8)	100	50/50
12 x 65	DIN 608 (4.8, 5.8)	90	50/50
12 x 70	DIN 608 (4.8, 5.8)	80	50/50
12 x 75	DIN 608 (4.8, 5.8)	80	50/50
12 x 80	DIN 608 (4.8, 5.8)	60	50/50
12 x 90	DIN 608 (4.8, 5.8)	50	50/50
12 x 100	DIN 608 (4.8, 5.8)	50	50/50

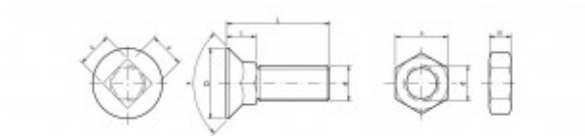
DIN 608 (8.8)

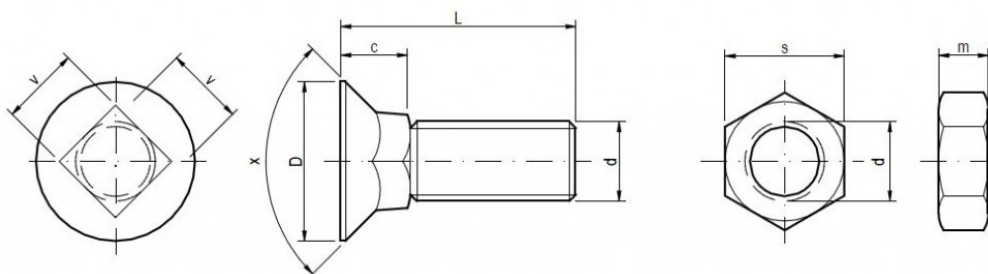
Plough bolts with square neck, with nuts DIN 934 (8.8)

THE MOST PARTICULAR USE

The bolts to machinery of LEMKEN

The most often used OEM code is Lemken 3015785 12 x 35.





Specifications

d	c	D	x	v	s	m
M 10	8,00	19,00	90°	10,00	17,00	8,00
M 12	10,50	24,00	90°	12,00	19,00	10,00
M 14	11,00	28,00	90°	14,00	22,00	11,00

The bolts DIN 608 do fit to machinery of OEM LEMKEN, ÖVERUM, PÖTTINGER, LANDSBERG, KVERNELAND, NIEMEYER, RABE, OVLAC, KÖCKERLING, FARMET, BEDNAR, ROSS, PHX, UNIA GRUDZIADZ, OPALL AGRI and many others.

Packaging

Packed in boxes / pcs		Packaging without nuts	Packaging without nuts
10 x 25	DIN 608 (8.8) zinc plated	200	150/150
10 x 30	DIN 608 (8.8) zinc plated	150	100/100
10 x 35	DIN 608 (8.8) zinc plated	150	100/100
10 x 40	DIN 608 (8.8) zinc plated	100	100/100
10 x 45	DIN 608 (8.8) zinc plated	100	50/50
10 x 50	DIN 608 (8.8) zinc plated	100	50/50
10 x 55	DIN 608 (8.8) zinc plated	100	50/50
10 x 60	DIN 608 (8.8) zinc plated	150	100/100
10 x 65	DIN 608 (8.8) zinc plated	150	100/100
10 x 70	DIN 608 (8.8) zinc plated	150	100/100

10 x 75	DIN 608 (8.8) zinc plated	100	100/100
10 x 80	DIN 608 (8.8) zinc plated	100	50/50
10 x 90	DIN 608 (8.8) zinc plated	80	50/50
10 x 100	DIN 608 (8.8) zinc plated	80	50/50
12 x 30	DIN 608 (8.8) zinc plated	100	50/50
12 x 35	DIN 608 (8.8) zinc plated	100	50/50
12 x 40	DIN 608 (8.8) zinc plated	150	100/100
12 x 45	DIN 608 (8.8) zinc plated	150	100/100
12 x 50	DIN 608 (8.8) zinc plated	100	100/100
12 x 55	DIN 608 (8.8) zinc plated	100	50/50
12 x 60	DIN 608 (8.8) zinc plated	100	50/50
12 x 65	DIN 608 (8.8) zinc plated	90	50/50
12 x 70	DIN 608 (8.8) zinc plated	80	50/50
12 x 75	DIN 608 (8.8) zinc plated	80	50/50
12 x 80	DIN 608 (8.8) zinc plated	60	50/50
12 x 85	DIN 608 (8.8) zinc plated	60	50/50
12 x 90	DIN 608 (8.8) zinc plated	50	50/50
12 x 100	DIN 608 (8.8) zinc plated	50	50/50
14 x 30	DIN 608 (8.8) zinc plated	50	50/50
14 x 35	DIN 608 (8.8) zinc plated	50	50/50
14 x 40	DIN 608 (8.8) zinc plated	50	50/50
14 x 45	DIN 608 (8.8) zinc plated	50	50/50
14 x 50	DIN 608 (8.8) zinc plated	50	50/50
14 x 55	DIN 608 (8.8) zinc plated	50	50/50
14 x 60	DIN 608 (8.8) zinc plated	50	50/50
14 x 65	DIN 608 (8.8) zinc plated	50	50/50
14 x 70	DIN 608 (8.8) zinc plated	50	50/50
14 x 75	DIN 608 (8.8) zinc plated	50	50/50
14 x 80	DIN 608 (8.8) zinc plated	50	50/50

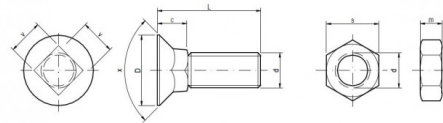
DIN 608 (8.8, 10.9)

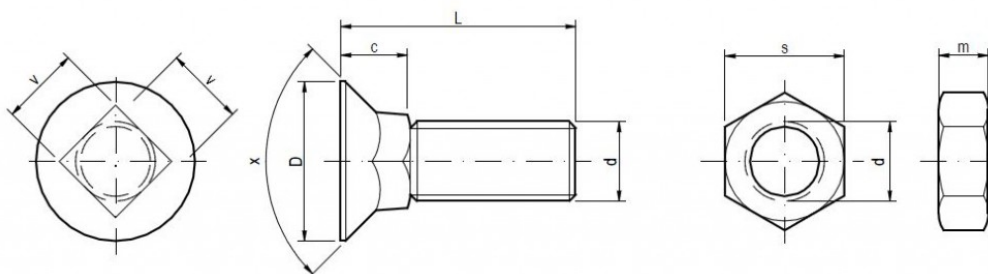
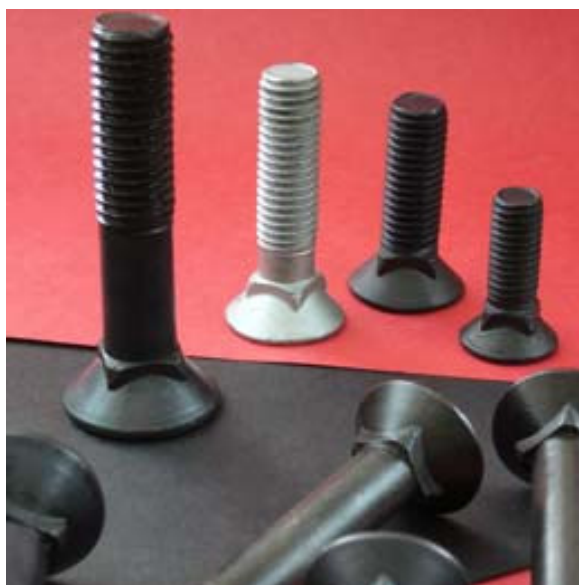
Plough bolts with square neck, with nuts DIN 934 (8.8)

THE MOST PARTICULAR USE

The bolts to machinery of LEMKEN

The most often used code OEM LEMKEN 3015785 12 x 35





Specifications

d	c	D	x	v	s	m
M 8	7,00	16,00	90°	8,00	13,00	6,50
M 10	8,00	19,00	90°	10,00	17,00	8,00
M 12	10,50	24,00	90°	12,00	19,00	10,00
M 14	11,00	28,00	90°	14,00	22,00	11,00

The bolts DIN 608 do fit to machinery of OEM LEMKEN, ÖVERUM, PÖTTINGER, LANDSBERG, KVERNELAND, NIEMEYER, RABE, OVLAC, KÖCKERLING, FARMET, BEDNAR, ROSS, PHX, UNIA GRUDZIADZ, OPALL AGRI, and many others.

Packaging

Packed in boxes / pcs		Packaging without nuts	Packaging with nuts
8 x 25	DIN 608 (8.8, 10.9)	250	200/200
8 x 30	DIN 608 (8.8, 10.9)	200	200/200
8 x 35	DIN 608 (8.8, 10.9)	150	100/100
8 x 40	DIN 608 (8.8, 10.9)	150	100/100
8 x 45	DIN 608 (8.8, 10.9)	250	200/200

8 x 50	DIN 608 (8.8, 10.9)	250	200/200
8 x 60	DIN 608 (8.8, 10.9)	200	150/150
8 x 70	DIN 608 (8.8, 10.9)	150	100/100
8 x 80	DIN 608 (8.8, 10.9)	150	100/100
10 x 25	DIN 608 (8.8, 10.9)	200	150/150
10 x 30	DIN 608 (8.8, 10.9)	150	100/100
10 x 35	DIN 608 (8.8, 10.9)	150	100/100
10 x 40	DIN 608 (8.8, 10.9)	100	100/100
10 x 45	DIN 608 (8.8, 10.9)	100	50/50
10 x 50	DIN 608 (8.8, 10.9)	100	50/50
10 x 55	DIN 608 (8.8, 10.9)	100	50/50
10 x 60	DIN 608 (8.8, 10.9)	150	100/100
10 x 65	DIN 608 (8.8, 10.9)	150	100/100
10 x 70	DIN 608 (8.8, 10.9)	150	100/100
10 x 75	DIN 608 (8.8, 10.9)	100	100/100
10 x 80	DIN 608 (8.8, 10.9)	100	50/50
10 x 90	DIN 608 (8.8, 10.9)	80	50/50
10 x 100	DIN 608 (8.8, 10.9)	80	50/50
12 x 30	DIN 608 (8.8, 10.9)	100	50/50
12 x 35	DIN 608 (8.8, 10.9)	100	50/50
12 x 40	DIN 608 (8.8, 10.9)	150	100/100
12 x 45	DIN 608 (8.8, 10.9)	150	100/100
12 x 50	DIN 608 (8.8, 10.9)	100	100/100
12 x 55	DIN 608 (8.8, 10.9)	100	50/50
12 x 60	DIN 608 (8.8, 10.9)	100	50/50
12 x 65	DIN 608 (8.8, 10.9)	90	50/50
12 x 70	DIN 608 (8.8, 10.9)	80	50/50
12 x 75	DIN 608 (8.8, 10.9)	80	50/50
12 x 80	DIN 608 (8.8, 10.9)	60	50/50
12 x 85	DIN 608 (8.8, 10.9)	60	50/50
12 x 90	DIN 608 (8.8, 10.9)	50	50/50
12 x 100	DIN 608 (8.8, 10.9)	50	50/50
14 x 30	DIN 608 (8.8, 10.9)	50	50/50
14 x 35	DIN 608 (8.8, 10.9)	50	50/50
14 x 40	DIN 608 (8.8, 10.9)	50	50/50
14 x 45	DIN 608 (8.8, 10.9)	50	50/50
14 x 50	DIN 608 (8.8, 10.9)	50	50/50
14 x 55	DIN 608 (8.8, 10.9)	50	50/50
14 x 60	DIN 608 (8.8, 10.9)	50	50/50
14 x 65	DIN 608 (8.8, 10.9)	50	50/50
14 x 70	DIN 608 (8.8, 10.9)	50	50/50
14 x 75	DIN 608 (8.8, 10.9)	50	50/50
14 x 80	DIN 608 (8.8, 10.9)	50	50/50

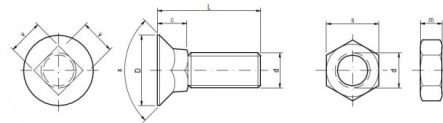
DIN 608 (12.9)

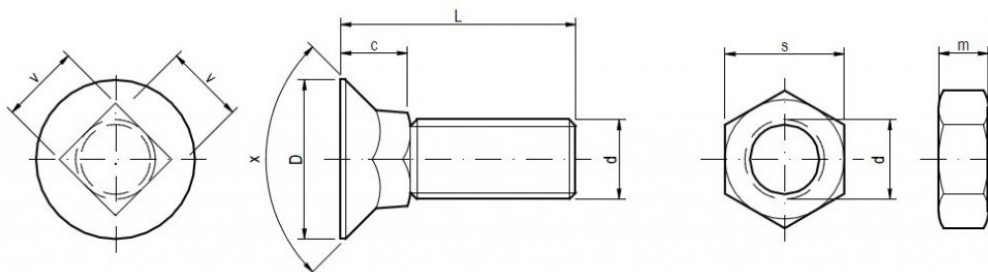
Plough bolts with square neck, with nuts DIN 934 (10.9)

THE MOST PARTICULAR USE

The bolts to machinery of LEMKEN

The most often used code OEM LEMKEN 3015785 12 x 35





Specifications

d	c	D	x	v	s	m
M 10	8,00	19,00	90°	10,00	17,00	8,00
M 12	10,50	24,00	90°	12,00	19,00	10,00
M 14	11,00	28,00	90°	14,00	22,00	11,00

The bolts DIN 608 do fit to machinery of OEM LEMKEN, ÖVERUM, PÖTTINGER, LANDSBERG, KVERNELAND, NIEMEYER, RABE, OVLAC, KÖCKERLING, FARMET, BEDNAR, ROSS, PHX, UNIA GRUDZIADZ, OPALL AGRI and many others.

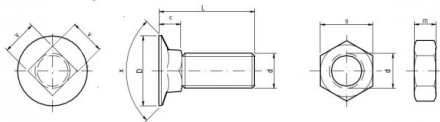
Packaging

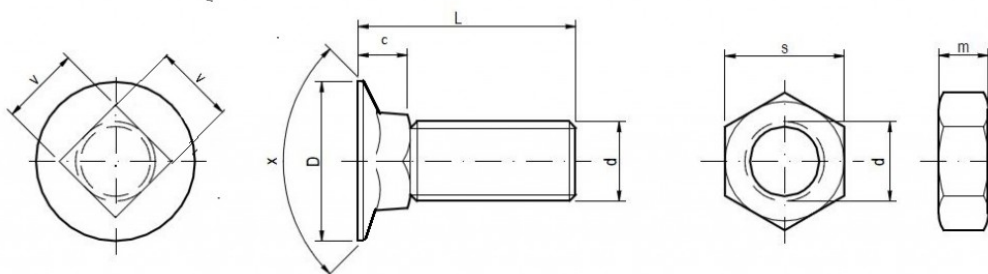
Packed in boxes / pcs		Packaging without nuts	Packaging with nuts
10 x 25	DIN 608 (12.9)	200	150/150
10 x 30	DIN 608 (12.9)	150	100/100
10 x 35	DIN 608 (12.9)	150	100/100
10 x 40	DIN 608 (12.9)	100	100/100
10 x 45	DIN 608 (12.9)	100	50/50
10 x 50	DIN 608 (12.9)	100	50/50
10 x 55	DIN 608 (12.9)	100	50/50
10 x 60	DIN 608 (12.9)	150	100/100
10 x 65	DIN 608 (12.9)	150	100/100
10 x 70	DIN 608 (12.9)	150	100/100

10 x 75	DIN 608 (12.9)	100	100/100
10 x 80	DIN 608 (12.9)	100	50/50
10 x 90	DIN 608 (12.9)	80	50/50
10 x 100	DIN 608 (12.9)	80	50/50
12 x 30	DIN 608 (12.9)	100	50/50
12 x 35	DIN 608 (12.9)	100	50/50
12 x 40	DIN 608 (12.9)	150	100/100
12 x 45	DIN 608 (12.9)	150	100/100
12 x 50	DIN 608 (12.9)	100	100/100
12 x 55	DIN 608 (12.9)	100	50/50
12 x 60	DIN 608 (12.9)	100	50/50
12 x 65	DIN 608 (12.9)	90	50/50
12 x 70	DIN 608 (12.9)	80	50/50
12 x 75	DIN 608 (12.9)	80	50/50
12 x 80	DIN 608 (12.9)	60	50/50
12 x 85	DIN 608 (12.9)	60	50/50
12 x 90	DIN 608 (12.9)	50	50/50
12 x 100	DIN 608 (12.9)	50	50/50
14 x 30	DIN 608 (12.9)	50	50/50
14 x 35	DIN 608 (12.9)	50	50/50
14 x 40	DIN 608 (12.9)	50	50/50
14 x 45	DIN 608 (12.9)	50	50/50
14 x 50	DIN 608 (12.9)	50	50/50
14 x 55	DIN 608 (12.9)	50	50/50
14 x 60	DIN 608 (12.9)	50	50/50
14 x 65	DIN 608 (12.9)	50	50/50
14 x 70	DIN 608 (12.9)	50	50/50
14 x 75	DIN 608 (12.9)	50	50/50
14 x 80	DIN 608 (12.9)	50	50/50

DIN 608 120° (8.8, 10.9)

Plough bolts with square neck - 120° head, with nuts DIN 934 (8.8)





Specifications

d	c	D	x	v	s	m
M 12	7,00	19,50	120°	12,00	19,00	10,00
M 14	9,60	22,00	120°	14,00	22,00	11,00

Packaging

Packed in boxes / pcs		Packaging without nuts	Packaging with nuts
12 x 30	DIN 608 120° (8.8, 10.9)	100	100/100
12 x 35	DIN 608 120° (8.8, 10.9)	100	100/100
12 x 40	DIN 608 120° (8.8, 10.9)	150	100/100
12 x 45	DIN 608 120° (8.8, 10.9)	150	100/100
12 x 50	DIN 608 120° (8.8, 10.9)	100	50/50
12 x 55	DIN 608 120° (8.8, 10.9)	100	50/50
12 x 60	DIN 608 120° (8.8, 10.9)	100	50/50
12 x 65	DIN 608 120° (8.8, 10.9)	90	50/50
12 x 70	DIN 608 120° (8.8, 10.9)	80	50/50
12 x 75	DIN 608 120° (8.8, 10.9)	80	50/50
12 x 80	DIN 608 120° (8.8, 10.9)	60	50/50
14 x 30	DIN 608 120° (8.8, 10.9)	50	50/50
14 x 35	DIN 608 120° (8.8, 10.9)	50	50/50
14 x 40	DIN 608 120° (8.8, 10.9)	50	50/50
14 x 45	DIN 608 120° (8.8, 10.9)	50	50/50

14 x 50	DIN 608 120° (8.8, 10.9)	50	50/50
14 x 55	DIN 608 120° (8.8, 10.9)	50	50/50
14 x 60	DIN 608 120° (8.8, 10.9)	50	50/50
14 x 65	DIN 608 120° (8.8, 10.9)	50	50/50
14 x 70	DIN 608 120° (8.8, 10.9)	50	50/50
14 x 75	DIN 608 120° (8.8, 10.9)	50	50/50
14 x 80	DIN 608 120° (8.8, 10.9)	50	50/50

DIN 608 (12.9) KV 3,5

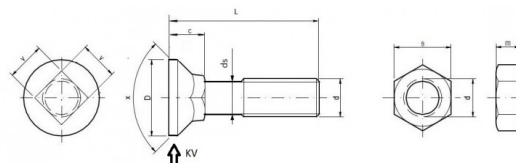
Plough bolts with square neck with nuts DIN 934 (10.9)

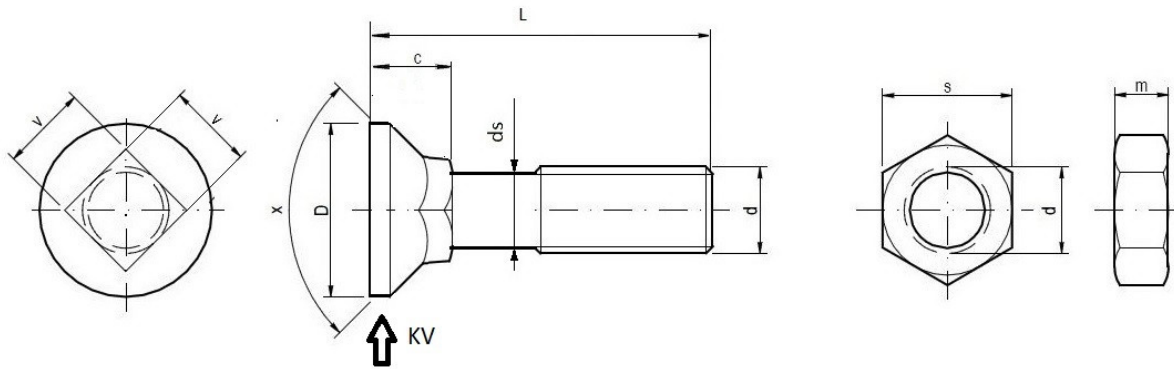
THE MOST PARTICULAR USE

The bolts to machinery of LEMKEN

The most often used code **OEM LEMKEN 3015721**

M 10 x 33





Specifications

d	c	D	x	v	s	m
M 10 KV 3,5	9,00	19,50	90°	10,00	17,00	8,00

Packaging

Packed in boxes / pcs		Packaging without nuts	Packaging with nuts
10 x 33	DIN 608 12.9 KV 3,5	150	100/100
10 x 45	DIN 608 12.9 KV 3,5	100	50/50

DIN 608 (12.9) KV 4

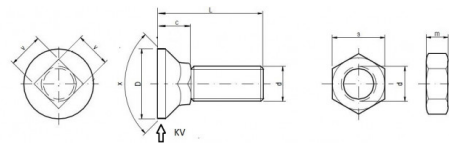
Plough bolts with square neck with nuts DIN 934 (10.9)

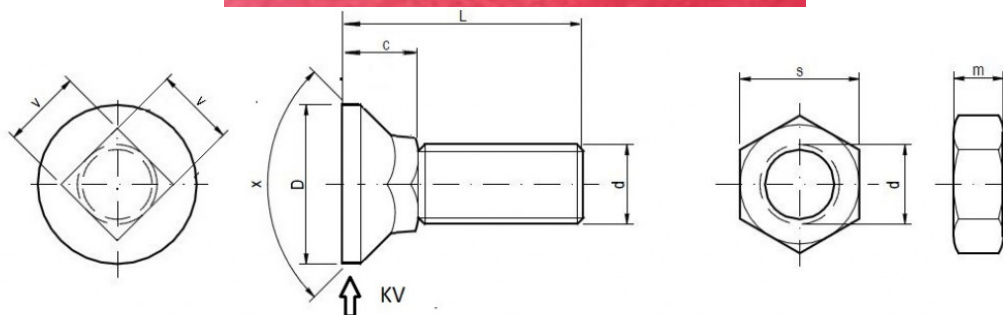
THE MOST PARTICULAR USE

The bolts to machinery of LEMKEN

The most often used code **OEM LEMKEN 3015789**

M 12 x 36





Specifications

d	c	D	x	v	s	m
M 12 KV 4	10,50	24,00	90°	12,00	19,00	10,00

Packaging

Packed in boxes / pcs		Packaging without nuts	Packaging with nuts
12 x 36	DIN 608 12.9 KV 4	100	50/50

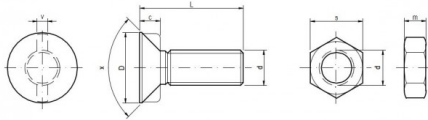
DIN 11014 (8.8, 10.9)

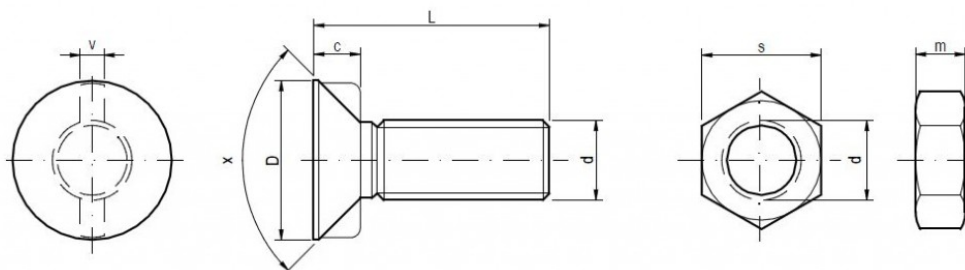
Plough bolts with 2 nibs, with nuts DIN 934 (8.8)

THE MOST PARTICULAR USE

The bolts to machinery of VOGEL & NOOT

The most often used bolt 12 x 35





Specifications

d	c	D	x	v	s	m
M 10	5,50	19,00	90°	3,20	17,00	8,00
M 12	7,50	24,00	90°	3,60	19,00	10,00
M 14	9,50	28,00	90°	4,00	22,00	11,00

The bolts DIN 11014 do fit to machinery of OEM VOGEL & NOOT, AMAZONE and many others.

Packaging

Packed in boxes / pcs		Packaging without nuts	Packaging with nuts
10 x 25	DIN 11014 (8.8, 10.9)	200	150/150
10 x 30	DIN 11014 (8.8, 10.9)	150	100/100
10 x 35	DIN 11014 (8.8, 10.9)	150	100/100
10 x 40	DIN 11014 (8.8, 10.9)	100	100/100
10 x 45	DIN 11014 (8.8, 10.9)	100	50/50
10 x 50	DIN 11014 (8.8, 10.9)	100	50/50
10 x 55	DIN 11014 (8.8, 10.9)	100	50/50
10 x 60	DIN 11014 (8.8, 10.9)	150	100/100
10 x 70	DIN 11014 (8.8, 10.9)	150	100/100
10 x 80	DIN 11014 (8.8, 10.9)	100	50/50
10 x 90	DIN 11014 (8.8, 10.9)	80	50/50
10 x 100	DIN 11014 (8.8, 10.9)	80	50/50

12 x 30	DIN 11014 (8.8, 10.9)	100	50/50
12 x 35	DIN 11014 (8.8, 10.9)	100	50/50
12 x 40	DIN 11014 (8.8, 10.9)	150	100/100
12 x 45	DIN 11014 (8.8, 10.9)	150	100/100
12 x 50	DIN 11014 (8.8, 10.9)	100	100/100
12 x 55	DIN 11014 (8.8, 10.9)	100	50/50
12 x 60	DIN 11014 (8.8, 10.9)	90	50/50
12 x 65	DIN 11014 (8.8, 10.9)	90	50/50
12 x 70	DIN 11014 (8.8, 10.9)	80	50/50
12 x 75	DIN 11014 (8.8, 10.9)	80	50/50
12 x 80	DIN 11014 (8.8, 10.9)	60	50/50
12 x 85	DIN 11014 (8.8, 10.9)	60	50/50
12 x 90	DIN 11014 (8.8, 10.9)	50	50/50
12 x 100	DIN 11014 (8.8, 10.9)	50	50/50
14 x 35	DIN 11014 (8.8, 10.9)	50	50/50
14 x 40	DIN 11014 (8.8, 10.9)	50	50/50
14 x 45	DIN 11014 (8.8, 10.9)	50	50/50
14 x 50	DIN 11014 (8.8, 10.9)	50	50/50
14 x 60	DIN 11014 (8.8, 10.9)	50	50/50
14 x 70	DIN 11014 (8.8, 10.9)	50	50/50
14 x 80	DIN 11014 (8.8, 10.9)	50	50/50
14 x 90	DIN 11014 (8.8, 10.9)	50	50/50

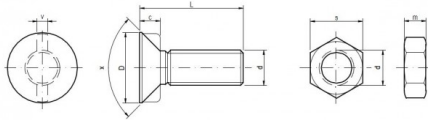
DIN 11014 (12.9)

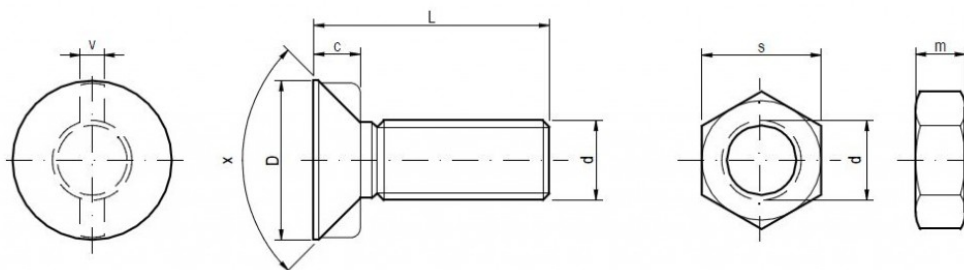
Plough bolts with 2 nibs, with nuts DIN 934 (10.9)

THE MOST PARTICULAR USE

The bolts to machinery of VOGEL & NOOT

The most often used bolt 12 x 35





Specifications

d	c	D	x	v	s	m
M 10	5,50	19,00	90°	3,20	17,00	8,00
M 12	7,50	24,00	90°	3,60	19,00	10,00
M 14	9,50	28,00	90°	4,00	22,00	11,00

The bolts DIN 11014 do fit to machinery of OEM VOGEL & NOOT, AMAZONE and many others.

Packaging

Packed in boxes / pcs		Packaging without nuts	Packaging with nuts
10 x 25	DIN 11014 (12.9)	200	150/150
10 x 30	DIN 11014 (12.9)	150	100/100
10 x 35	DIN 11014 (12.9)	150	100/100
10 x 40	DIN 11014 (12.9)	100	100/100
10 x 45	DIN 11014 (12.9)	100	50/50
10 x 50	DIN 11014 (12.9)	100	50/50
10 x 55	DIN 11014 (12.9)	100	50/50
10 x 60	DIN 11014 (12.9)	150	100/100
10 x 70	DIN 11014 (12.9)	150	100/100
10 x 80	DIN 11014 (12.9)	100	50/50
10 x 90	DIN 11014 (12.9)	80	50/50
10 x 100	DIN 11014 (12.9)	80	50/50

12 x 30	DIN 11014 (12.9)	100	50/50
12 x 35	DIN 11014 (12.9)	100	50/50
12 x 40	DIN 11014 (12.9)	150	100/100
12 x 45	DIN 11014 (12.9)	150	100/100
12 x 50	DIN 11014 (12.9)	100	100/100
12 x 55	DIN 11014 (12.9)	100	50/50
12 x 60	DIN 11014 (12.9)	90	50/50
12 x 65	DIN 11014 (12.9)	90	50/50
12 x 70	DIN 11014 (12.9)	80	50/50
12 x 75	DIN 11014 (12.9)	80	50/50
12 x 80	DIN 11014 (12.9)	60	50/50
12 x 85	DIN 11014 (12.9)	60	50/50
12 x 90	DIN 11014 (12.9)	50	50/50
12 x 100	DIN 11014 (12.9)	50	50/50
14 x 35	DIN 11014 (12.9)	50	50/50
14 x 40	DIN 11014 (12.9)	50	50/50
14 x 45	DIN 11014 (12.9)	50	50/50
14 x 50	DIN 11014 (12.9)	50	50/50
14 x 60	DIN 11014 (12.9)	50	50/50
14 x 70	DIN 11014 (12.9)	50	50/50
14 x 80	DIN 11014 (12.9)	50	50/50
14 x 90	DIN 11014 (12.9)	50	50/50

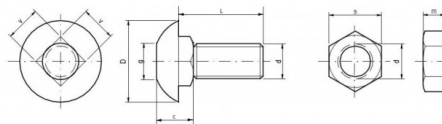
DIN 603 - MP (10.9)

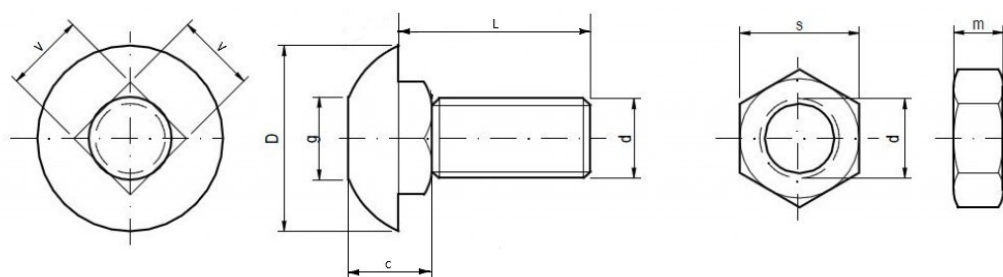
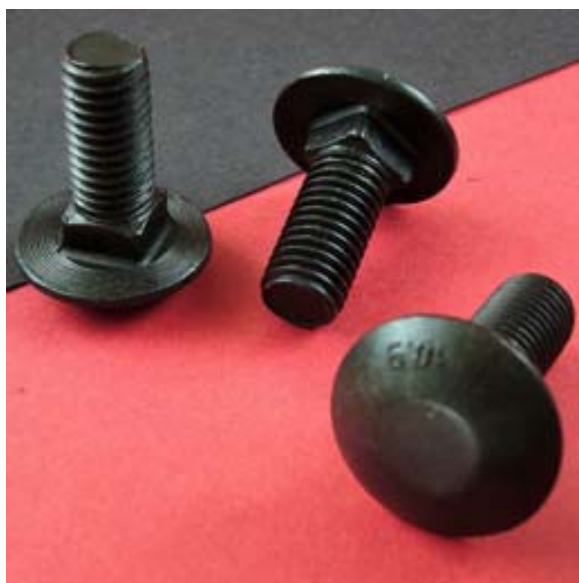
**The bolts with square neck and large cup head, with nuts
DIN 934 (8.8)**

THE MOST PARTICULAR USE

The bolts to machinery of LEMKEN

The most often used code OEM LEMKEN 3011805 12 x 30, 12 x 35





Specifications

d	c	D	g	v	s	m
M 12	12,50	28,00	12,00	12,00	19,00	10,00

The bolts DIN 603 MP do fit to machinery of OEM Lemken - RUBIN.

Packaging

Packed in boxes / pcs		Packaging without nuts	Packaging with nuts
12 x 30	DIN 603 - MP (10.9)	150	100/100
12 x 35	DIN 603 - MP (10.9)	100	100/100

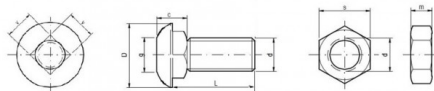
DIN - MP 8677 (10.9)

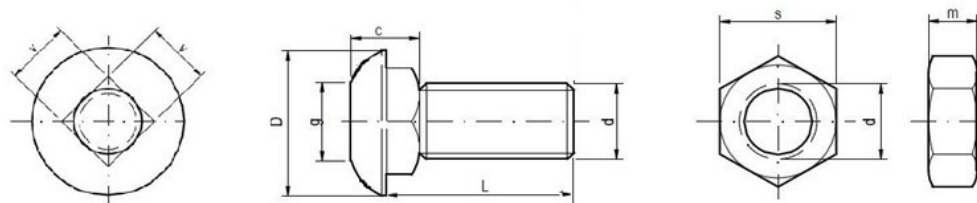
The bolts with square neck and small cup head, with nuts
DIN 934 (8.8)

THE MOST PARTICULAR USE

The bolts to machinery of LEMKEN

The most often used code OEM LEMKEN 3011805 12 x 30, 12 x 35





Specifications

d	c	D	g	v	s	m
M 12	13,00	22,00	13,00	12,00	19,00	10,00

The bolts DIN - MP 8677 do fit to machinery of OEM LEMKEN - SMARAGD, THORIT, TOPAS.

Packaging

Packed in boxes / pcs		Packaging without nuts	Packaging with nuts
12 x 30	DIN - MP 8677 (10.9)	150	100/100
12 x 35	DIN - MP 8677 (10.9)	100	100/100

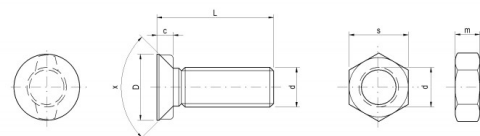
ISO 5713 (8.8, 10.9)

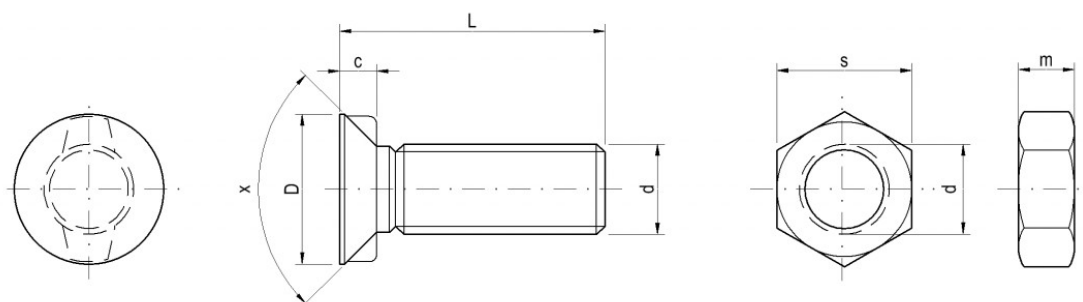
Plough bolts with 2 nibsand, with nuts DIN 934 (8.8)

THE MOST PARTICULAR USE

The bolts to machinery of KVERNELAND

The most often used code OEM Kverneland KK033107 12 x 35





Specifications

d	c	D	x	s	m
M 10	4,50	16,00	90°	17,00	8,00
M 12	5,50	20,00	90°	19,00	10,00
M 14	7,00	24,00	90°	22,00	11,00

The bolts ISO 5713 do fit to machinery of OEM KVERNELAND, ÖVERUM, PÖTTINGER, LANDSBERG, NIEMEYER, RABE, OVLAC, KÖCKERLING, FARMET, BEDNAR, ROSS, PHX, UNIA GRUDZIADZ, OPALL AGRI, and many others.

Packaging

Packed in boxes / pcs		Packaging without nuts	Packaging with nuts
10 x 25	ISO 5713 (8.8, 10.9)	200	150/150
10 x 30	ISO 5713 (8.8, 10.9)	150	100/100
10 x 35	ISO 5713 (8.8, 10.9)	150	100/100
10 x 40	ISO 5713 (8.8, 10.9)	100	100/100
10 x 45	ISO 5713 (8.8, 10.9)	100	50/50
10 x 50	ISO 5713 (8.8, 10.9)	100	50/50
10 x 55	ISO 5713 (8.8, 10.9)	100	50/50
10 x 60	ISO 5713 (8.8, 10.9)	150	100/100
10 x 70	ISO 5713 (8.8, 10.9)	150	100/100

10 x 80	ISO 5713 (8.8, 10.9)	100	50/50
10 x 90	ISO 5713 (8.8, 10.9)	80	50/50
12 x 30	ISO 5713 (8.8, 10.9)	100	50/50
12 x 35	ISO 5713 (8.8, 10.9)	100	50/50
12 x 37	ISO 5713 (8.8, 10.9)	100	50/50
12 x 40	ISO 5713 (8.8, 10.9)	150	100/100
12 x 45	ISO 5713 (8.8, 10.9)	150	100/100
12 x 50	ISO 5713 (8.8, 10.9)	100	100/100
12 x 55	ISO 5713 (8.8, 10.9)	100	50/50
12 x 60	ISO 5713 (8.8, 10.9)	90	50/50
12 x 70	ISO 5713 (8.8, 10.9)	80	50/50
12 x 80	ISO 5713 (8.8, 10.9)	60	50/50
12 x 90	ISO 5713 (8.8, 10.9)	50	50/50
12 x 100	ISO 5713 (8.8, 10.9)	50	50/50
14 x 30	ISO 5713 (8.8, 10.9)	50	50/50
14 x 35	ISO 5713 (8.8, 10.9)	50	50/50
14 x 40	ISO 5713 (8.8, 10.9)	50	50/50
14 x 42	ISO 5713 (8.8, 10.9)	50	50/50
14 x 45	ISO 5713 (8.8, 10.9)	50	50/50
14 x 50	ISO 5713 (8.8, 10.9)	50	50/50
14 x 55	ISO 5713 (8.8, 10.9)	50	50/50
14 x 60	ISO 5713 (8.8, 10.9)	50	50/50
14 x 70	ISO 5713 (8.8, 10.9)	50	50/50
14 x 80	ISO 5713 (8.8, 10.9)	50	50/50

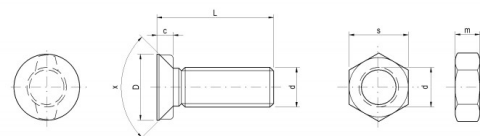
ISO 5713 (12.9)

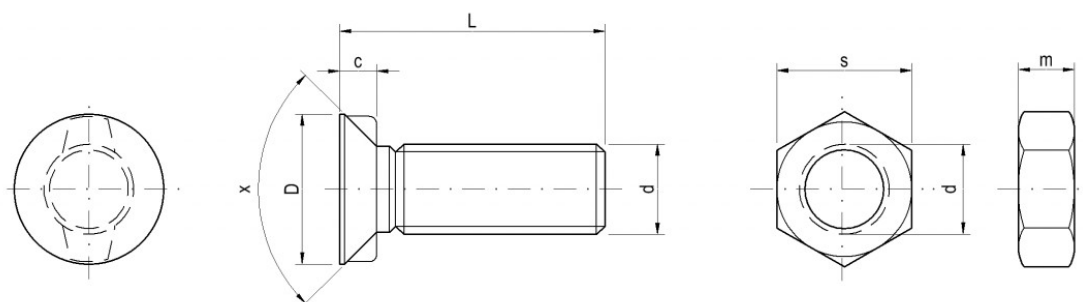
Plough bolts with 2 nibs and nuts DIN 934 (10.9)

THE MOST PARTICULAR USE

The bolts to machinery of KVERNELAND

The most often used code OEM Kverneland KK033107 12 x 35





Specifications

d	c	D	x	s	m
M 10	4,50	16,00	90°	17,00	8,00
M 12	5,50	20,00	90°	19,00	10,00
M 14	7,00	24,00	90°	22,00	11,00

The bolts ISO 5713 do fit to machinery of OEM KVERNELAND, ÖVERUM, PÖTTINGER, LANDSBERG, NIEMEYER, RABE, OVLAC, KÖCKERLING, FARMET, BEDNAR, ROSS, PHX, UNIA GRUDZIADZ, OPALL AGRI, and many others.

Packaging

Packed in boxes / pcs		Packaging without nuts	Packaging with nuts
10 x 25	ISO 5713 (12.9)	200	150/150
10 x 30	ISO 5713 (12.9)	150	100/100
10 x 35	ISO 5713 (12.9)	150	100/100
10 x 40	ISO 5713 (12.9)	100	100/100
10 x 45	ISO 5713 (12.9)	100	50/50
10 x 50	ISO 5713 (12.9)	100	50/50
10 x 55	ISO 5713 (12.9)	100	50/50
10 x 60	ISO 5713 (12.9)	150	100/100
10 x 70	ISO 5713 (12.9)	150	100/100

10 x 80	ISO 5713 (12.9)	100	50/50
12 x 30	ISO 5713 (12.9)	100	50/50
12 x 35	ISO 5713 (12.9)	100	50/50
12 x 37	ISO 5713 (12.9)	100	50/50
12 x 40	ISO 5713 (12.9)	150	100/100
12 x 45	ISO 5713 (12.9)	150	100/100
12 x 50	ISO 5713 (12.9)	100	100/100
12 x 55	ISO 5713 (12.9)	100	50/50
12 x 60	ISO 5713 (12.9)	90	50/50
12 x 70	ISO 5713 (12.9)	80	50/50
12 x 80	ISO 5713 (12.9)	60	50/50
12 x 90	ISO 5713 (12.9)	50	50/50
12 x 100	ISO 5713 (12.9)	50	50/50
14 x 30	ISO 5713 (12.9)	50	50/50
14 x 35	ISO 5713 (12.9)	50	50/50
14 x 40	ISO 5713 (12.9)	50	50/50
14 x 42	ISO 5713 (12.9)	50	50/50
14 x 45	ISO 5713 (12.9)	50	50/50
14 x 50	ISO 5713 (12.9)	50	50/50
14 x 55	ISO 5713 (12.9)	50	50/50
14 x 60	ISO 5713 (12.9)	50	50/50
14 x 70	ISO 5713 (12.9)	50	50/50
14 x 80	ISO 5713 (12.9)	50	50/50

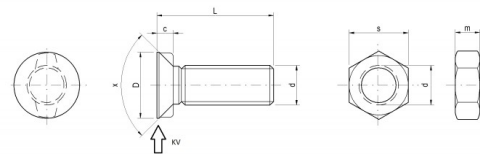
ISO 5713 (8.8, 10.9) KV 1,3

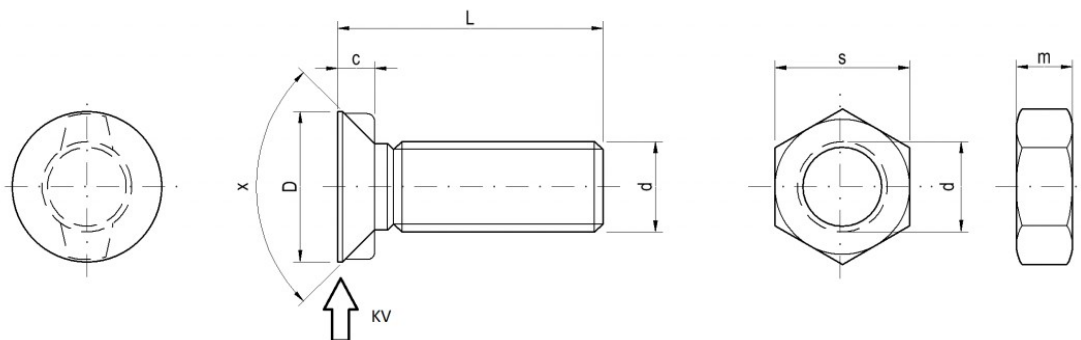
Plough bolts with height of head 1,3 mm, 2 nibs and with nuts DIN 934 (8.8)

THE MOST PARTICULAR USE

The bolts to machinery of KVERNELAND

The most often used bolt - KVERNELAND 12 x 35





Specifications

d	c	D	x	s	m
M 12 KV 1,3	5,00	20,00	90°	19,00	10,00

The bolts ISO 5713 do fit to machinery of OEM KVERNELAND, ÖVERUM, PÖTTINGER, LANDSBERG, NIEMEYER, RABE, OVLAC, KÖCKERLING, FARMET, BEDNAR, ROSS, PHX, UNIA GRUDZIADZ, OPALL AGRI, and many others

Packaging

Packed in boxes / pcs		Packaging without nuts	Packaging with nuts
12 x 30	ISO 5713 (8.8,10.9) KV 1,3	100	50/50
12 x 35	ISO 5713 (8.8,10.9) KV 1,3	100	50/50
12 x 40	ISO 5713 (8.8,10.9) KV 1,3	150	100/100
12 x 45	ISO 5713 (8.8,10.9) KV 1,3	150	100/100
12 x 50	ISO 5713 (8.8,10.9) KV 1,3	100	100/100
12 x 60	ISO 5713 (8.8,10.9) KV 1,3	90	50/50
12 x 70	ISO 5713 (8.8,10.9) KV 1,3	80	50/50
12 x 80	ISO 5713 (8.8,10.9) KV 1,3	60	50/50
12 x 90	ISO 5713 (8.8,10.9) KV 1,3	50	50/50
12 x 100	ISO 5713 (8.8,10.9) KV 1,3	50	50/50

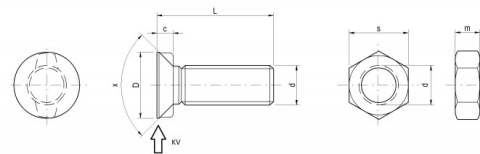
ISO 5713 (12.9) KV 1,3

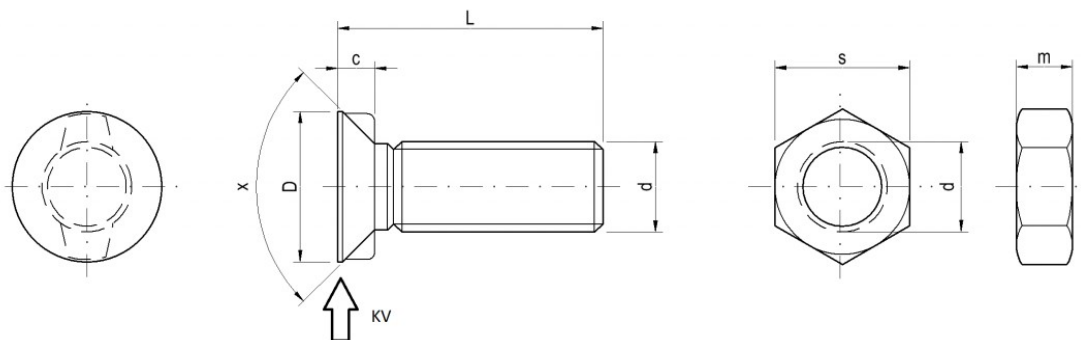
Plough bolts with height of head 1,3 mm, 2 nibs and with nuts DIN 934 (10.9)

THE MOST PARTICULAR USE

The bolts to machinery of KVERNELAND

The most often used bolt - KVERNELAND 12 x 35





Specifications

d	c	D	x	s	m
M 12 KV 1,3	5,00	20,00	90°	19,00	10,00

The bolts ISO 5713 do fit to machinery of OEM KVERNELAND, ÖVERUM, PÖTTINGER, LANDSBERG, NIEMEYER, RABE, OVLAC, KÖCKERLING, FARMET, BEDNAR, ROSS, PHX, UNIA GRUDZIADZ, OPALL AGRI, and many others

Packaging

Packed in boxes / pcs		Packaging without nuts	Packaging with nuts
12 x 30	ISO 5713 (12.9) KV 1,3	100	50/50
12 x 35	ISO 5713 (12.9) KV 1,3	100	50/50
12 x 40	ISO 5713 (12.9) KV 1,3	150	100/100
12 x 45	ISO 5713 (12.9) KV 1,3	150	100/100
12 x 50	ISO 5713 (12.9) KV 1,3	100	100/100
12 x 60	ISO 5713 (12.9) KV 1,3	90	50/50
12 x 70	ISO 5713 (12.9) KV 1,3	80	50/50
12 x 80	ISO 5713 (12.9) KV 1,3	60	50/50
12 x 90	ISO 5713 (12.9) KV 1,3	50	50/50
12 x 100	ISO 5713 (12.9) KV 1,3	50	50/50

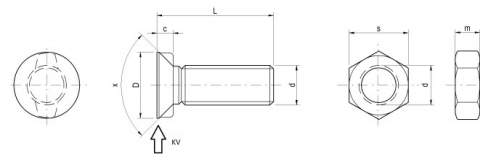
ISO 5713 (8.8, 10.9) KV 1,8

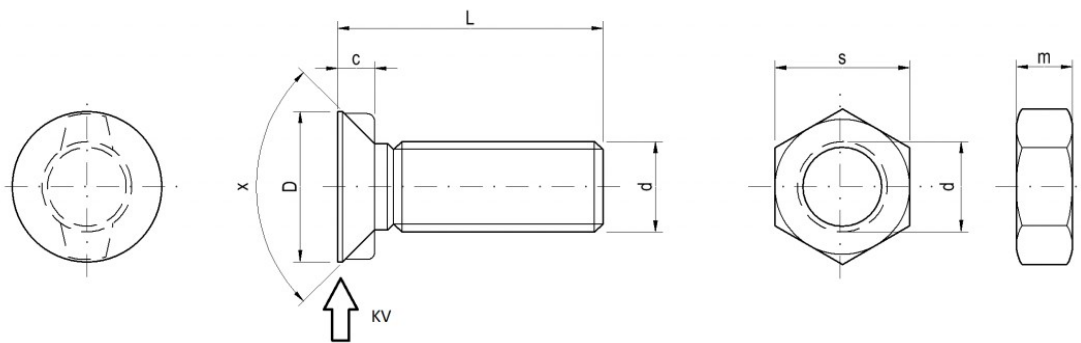
Plough bolts with height of head 1,8 mm, 2 nibs and with nuts DIN 934 (8.8)

THE MOST PARTICULAR USE

The bolts to machinery of KVERNELAND

The most often used bolt - KVERNELAND 12 x 35





Specifications

d	c	D	x	s	m
M 14 KV 1,8	6,80	24,00	90°	22,00	11,00

The bolts ISO 5713 do fit to machinery of OEM KVERNELAND, ÖVERUM, PÖTTINGER, LANDSBERG, NIEMEYER, RABE, OVLAC, KÖCKERLING, FARMET, BEDNAR, ROSS, PHX, UNIA GRUDZIADZ, OPALL AGRI, and many others

Packaging

Packed in boxes / pcs		Packaging without nuts	Packaging with nuts
14 x 30	ISO 5713 (8.8,10.9) KV 1,8	50	50/50
14 x 35	ISO 5713 (8.8,10.9) KV 1,8	50	50/50
14 x 40	ISO 5713 (8.8,10.9) KV 1,8	50	50/50
14 x 45	ISO 5713 (8.8,10.9) KV 1,8	50	50/50
14 x 50	ISO 5713 (8.8,10.9) KV 1,8	50	50/50
14 x 60	ISO 5713 (8.8,10.9) KV 1,8	50	50/50
14 x 70	ISO 5713 (8.8,10.9) KV 1,8	50	50/50
14 x 80	ISO 5713 (8.8,10.9) KV 1,8	50	50/50

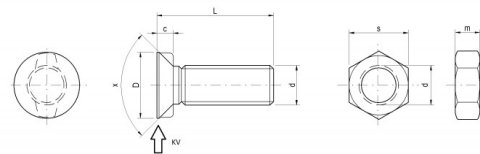
ISO 5713 (12.9) KV 1,8

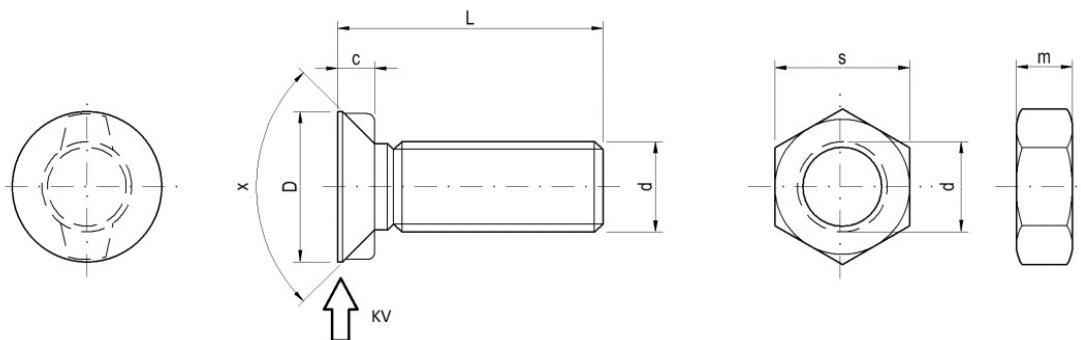
Plough bolts with height of head 1,8 mm, 2 nibs and with nuts DIN 934 (10.9)

THE MOST PARTICULAR USE

The bolts to machinery of KVERNELAND

The most often used bolt - KVERNELAND 12 x 35





Specifications

d	c	D	x	s	m
M 14 KV 1,8	6,80	24,00	90°	22,00	11,00

The bolts ISO 5713 do fit to machinery of OEM KVERNELAND, ÖVERUM, PÖTTINGER, LANDSBERG, NIEMEYER, RABE, OVLAC, KÖCKERLING, FARMET, BEDNAR, ROSS, PHX, UNIA GRUDZIADZ, OPALL AGRI, and many others

Packaging

Packed in boxes / pcs		Packaging without nuts	Packaging with nuts
14 x 30	ISO 5713 (12.9) KV 1,8	50	50/50
14 x 35	ISO 5713 (12.9) KV 1,8	50	50/50
14 x 40	ISO 5713 (12.9) KV 1,8	50	50/50
14 x 45	ISO 5713 (12.9) KV 1,8	50	50/50
14 x 50	ISO 5713 (12.9) KV 1,8	50	50/50
14 x 60	ISO 5713 (12.9) KV 1,8	50	50/50
14 x 70	ISO 5713 (12.9) KV 1,8	50	50/50
14 x 80	ISO 5713 (12.9) KV 1,8	50	50/50

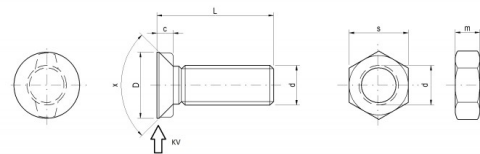
ISO 5713 (8.8, 10.9) KV 4,0

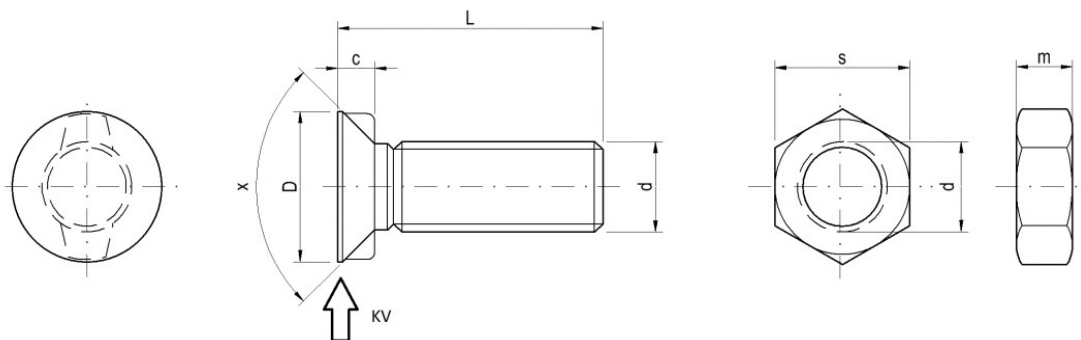
Plough bolts with height of head 4,0 mm, 2 nibs and with nuts DIN 934 (8.8)

THE MOST PARTICULAR USE

The bolts to machinery of KVERNELAND

The most often used bolt - KVERNELAND 12 x 35





Specifications

d	c	D	x	s	m
M 12 KV 4,0	8,00	20,00	90°	19,00	10,00

The bolts ISO 5713 do fit to machinery of OEM KVERNELAND, ÖVERUM, PÖTTINGER, LANDSBERG, NIEMEYER, RABE, OVLAC, KÖCKERLING, FARMET, BEDNAR, ROSS, PHX, UNIA GRUDZIADZ, OPALL AGRI, and many others

Packaging

Packed in boxes / pcs		Packaging without nuts	Packaging with nuts
12 x 30	ISO 5713 (8.8,10.9) KV 4	100	50/50
12 x 35	ISO 5713 (8.8,10.9) KV 4	100	50/50
12 x 40	ISO 5713 (8.8,10.9) KV 4	150	100/100
12 x 45	ISO 5713 (8.8,10.9) KV 4	150	100/100
12 x 50	ISO 5713 (8.8,10.9) KV 4	100	100/100
12 x 60	ISO 5713 (8.8,10.9) KV 4	90	50/50
12 x 70	ISO 5713 (8.8,10.9) KV 4	80	50/50
12 x 80	ISO 5713 (8.8,10.9) KV 4	60	50/50
12 x 90	ISO 5713 (8.8,10.9) KV 4	50	50/50
12 x 100	ISO 5713 (8.8,10.9) KV 4	50	50/50

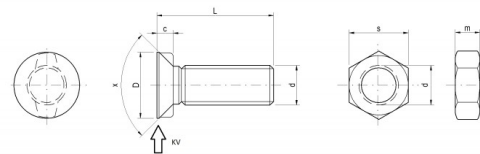
ISO 5713 (12.9) KV 4,0

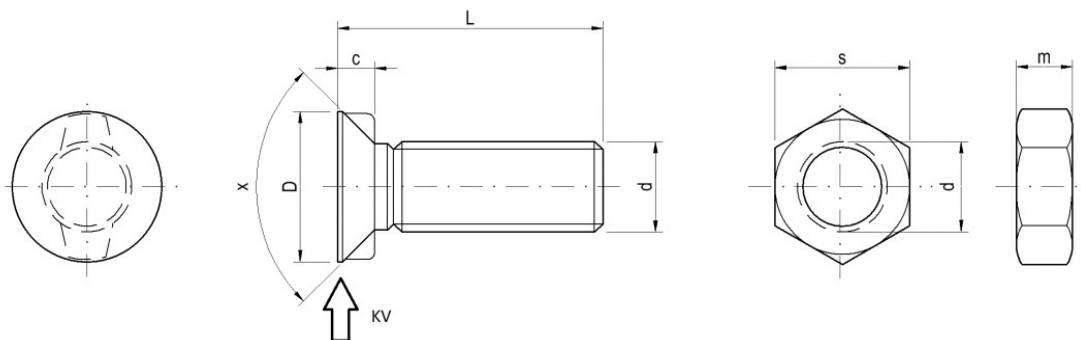
Plough bolts with height of head 4,0 mm, 2 nibs and with nuts DIN 934 (10.9)

THE MOST PARTICULAR USE

The bolts to machinery of KVERNELAND

The most often used bolt - KVERNELAND 12 x 35





Specifications

d	c	D	x	s	m
M 12 KV 4,0	8,00	20,00	90°	19,00	10,00

The bolts ISO 5713 do fit to machinery of OEM KVERNELAND, ÖVERUM, PÖTTINGER, LANDSBERG, NIEMEYER, RABE, OVLAC, KÖCKERLING, FARMET, BEDNAR, ROSS, PHX, UNIA GRUDZIADZ, OPALL AGRI, and many others

Packaging

Packed in boxes / pcs		Packaging without nuts	Packaging with nuts
12 x 30	ISO 5713 (12.9) KV 4	100	50/50
12 x 35	ISO 5713 (12.9) KV 4	100	50/50
12 x 40	ISO 5713 (12.9) KV 4	150	100/100
12 x 45	ISO 5713 (12.9) KV 4	150	100/100
12 x 50	ISO 5713 (12.9) KV 4	100	100/100
12 x 60	ISO 5713 (12.9) KV 4	90	50/50
12 x 70	ISO 5713 (12.9) KV 4	80	50/50
12 x 80	ISO 5713 (12.9) KV 4	60	50/50
12 x 90	ISO 5713 (12.9) KV 4	50	50/50
12 x 100	ISO 5713 (12.9) KV 4	50	50/50

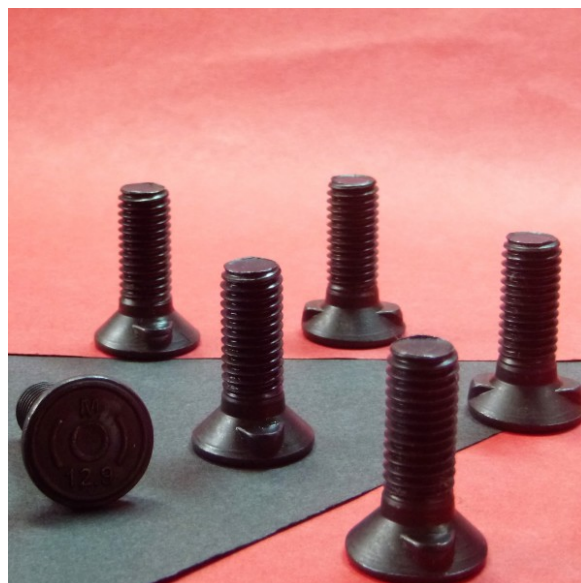
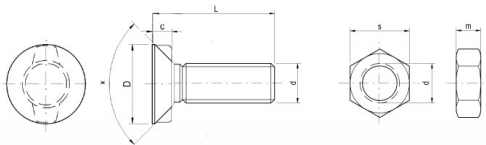
ISO 5713 BH - BIG HEAD (12.9)

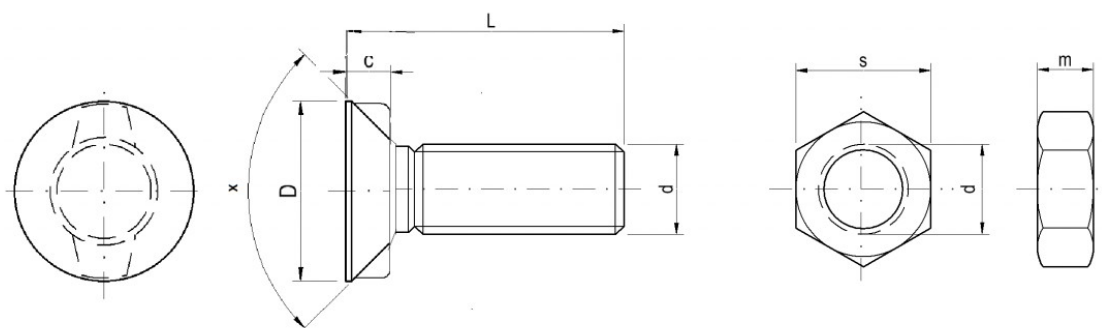
Plough bolts with big head and 2 nibs and with nuts DIN 934 (10.9)

THE MOST PARTICULAR USE

The bolts to machinery of KVERNELAND

The most often used bolt - Kverneland 10 x 35.





Specifications

d	c	D	x	s	m
M 10	6,50	20,00	90°	17,00	8,00

The bolts ISO 5713 do fit to machinery of OEM KVERNELAND.

Packaging

Packed in boxes / pcs		Packaging without nuts	Packaging with nuts
10 x 25	ISO 5713 BH (12.9)	200	150/150
10 x 30	ISO 5713 BH (12.9)	150	100/100
10 x 35	ISO 5713 BH (12.9)	150	100/100
10 x 40	ISO 5713 BH (12.9)	100	100/100
10 x 45	ISO 5713 BH (12.9)	100	50/50
10 x 50	ISO 5713 BH (12.9)	100	50/50
10 x 60	ISO 5713 BH (12.9)	150	100/100
10 x 70	ISO 5713 BH (12.9)	150	100/100
10 x 80	ISO 5713 BH (12.9)	100	50/50

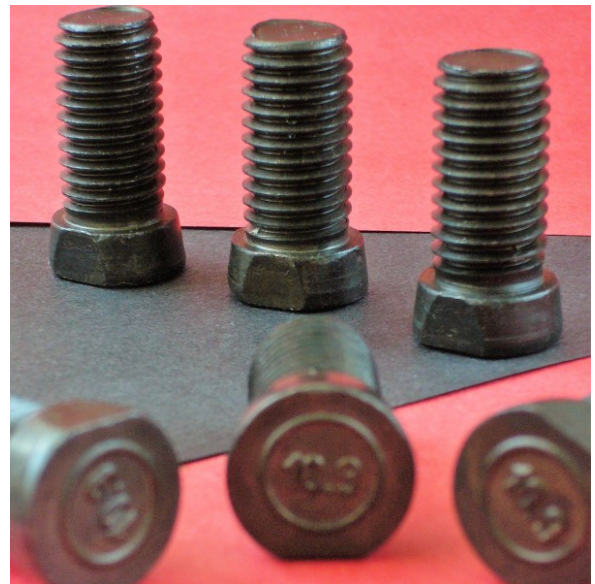
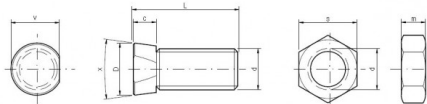
MP - 1 (10.9, 12.9)

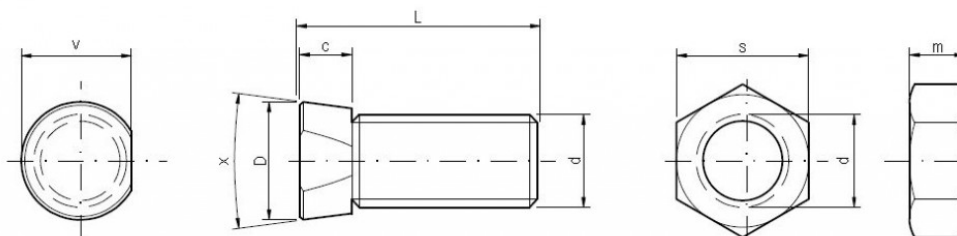
Plough bolts with conical head with nuts DIN 934 (8.8, 10.9)

THE MOST PARTICULAR USE

The bolts to machinery of KVERNELAND

The most often used OEM codes are Kverneland: KK0133333 14 x 34





Specifications

d	c	D	x	v	s	m
M14	7,00	18,00	15°	17,00	22,00	11,00

The bolts MP - 1 do fit to to tillage machinery of OEM KVERNELAND, ÖVERUM, PÖTTINGER, LEMKEN, NIEMEYER, RABE, OVLAC, KÖCKERLING, FARMET, BEDNAR, ROSS, PHX, UNIA GRUDZIADZ, OPALLI AGRI, LANDSBERG, and many others.

Packaging

Packed in boxes / pcs		Packing without nuts	Packing with nuts
14 x 30	MP - 1 10.9,12.9	100	50/50
14 x 34	MP - 1 10.9,12.9	100	50/50
14 x 35	MP - 1 10.9,12.9	100	50/50
14 x 37	MP - 1 10.9,12.9	100	50/50
14 x 38	MP - 1 10.9,12.9	100	50/50
14 x 40	MP - 1 10.9,12.9	50	50/50
14 x 42	MP - 1 10.9,12.9	50	50/50
14 x 44	MP - 1 10.9,12.9	50	50/50
14 x 45	MP - 1 10.9,12.9	50	50/50
14 x 50	MP - 1 10.9,12.9	50	50/50
14 x 60	MP - 1 10.9,12.9	50	50/50
14 x 70	MP - 1 10.9,12.9	50	50/50

14 x 80	MP - 1 10.9,12.9	50	50/50
---------	------------------	----	-------

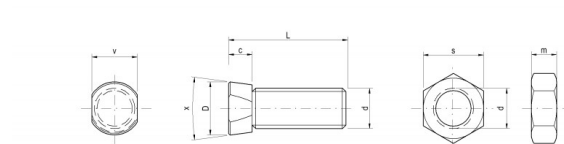
MP - 2 (10.9, 12.9)

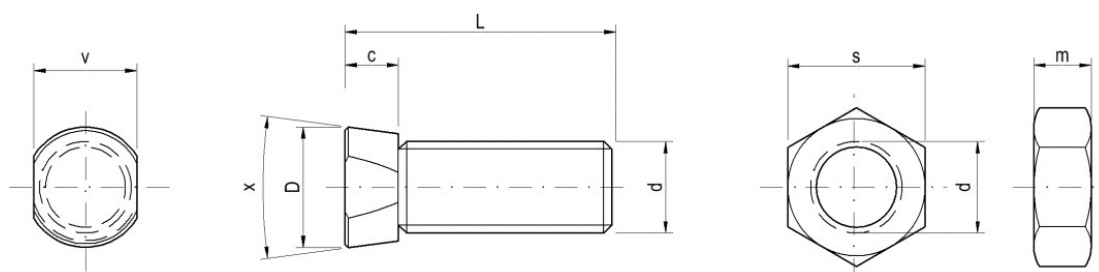
Plough bolts with conical head with nuts DIN 934 (10.9)

THE MOST PARTICULAR USE

The bolts to machinery of KVERNELAND

The most often used OEM codes are Kverneland: KK013228 M12 x 34, KK013234 M12 x 38





Specifications

d	c	D	x	v	s	m
M 10	7,00	15,90	15°	13,50	17,00	8,00
M 12	7,00	15,90	15°	13,50	19,00	10,00

The bolts MP - 2 do fit to machinery of OEM KVERNELAND, ÖVERUM, PÖTTINGER, LANDSBERG, LEMKEN, NIEMEYER, RABE, OVLAC, KÖCKERLING, FARMET, BEDNAR, ROSS PHX, UNIA GRUDZIADZ, OPALL AGRI and many others.

Packaging

Packed in boxes / pcs		Packing without nuts	Packaging with nuts
10 x 25	MP - 2 10.9, 12.9	100	100/100
10 x 30	MP - 2 10.9, 12.9	100	100/100
10 x 35	MP - 2 10.9, 12.9	100	100/100
10 x 40	MP - 2 10.9, 12.9	100	100/100
12 x 30	MP - 2 10.9, 12.9	150	100/100
12 x 33	MP - 2 10.9, 12.9	150	100/100
12 x 34	MP - 2 10.9, 12.9	150	100/100
12 x 35	MP - 2 10.9, 12.9	150	100/100
12 x 37	MP - 2 10.9, 12.9	100	50/50

12 x 38	MP - 2 10.9, 12.9	100	50/50
12 x 40	MP - 2 10.9, 12.9	100	50/50
12 x 42	MP - 2 10.9, 12.9	100	50/50
12 x 45	MP - 2 10.9, 12.9	100	50/50
12 x 50	MP - 2 10.9, 12.9	100	50/50
12 x 55	MP - 2 10.9, 12.9	50	50/50
12 x 60	MP - 2 10.9, 12.9	50	50/50
12 x 70	MP - 2 10.9, 12.9	50	50/50
12 x 80	MP - 2 10.9, 12.9	50	50/50
12 x 90	MP - 2 10.9, 12.9	50	50/50
12 x 100	MP - 2 10.9, 12.9	50	50/50

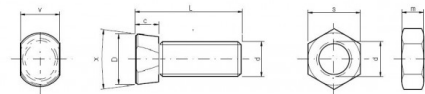
MP - 2 - 30° (12.9)

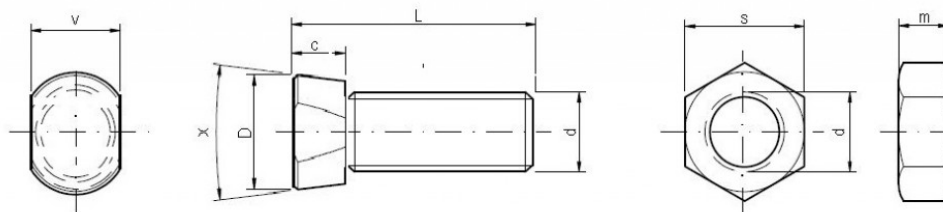
Plough bolts with conical head 30° with nuts DIN 934 (10.9)
)

THE MOST PARTICULAR USE

The bolts to machinery of VOGEL&NOOT

The most often used bolt 12 x 40





Specifications

d	c	D	x	v	s	m
M 12	9,00	17,50	30°	13,30	19,00	10,00
M 14	9,00	18,50	30°	14,20	22,00	11,00

The bolts MP - 2 30° do fit to machinery of OEM VOGEL&NOOT, AMAZONE and many others

Packaging

Packed in boxes / pcs		Packaging without nuts	Packaging with nuts
12 x 30	MP - 2 30° 12.9	150	100/100
12 x 33	MP - 2 30° 12.9	150	100/100
12 x 34	MP - 2 30° 12.9	150	100/100
12 x 35	MP - 2 30° 12.9	150	100/100
12 x 37	MP - 2 30° 12.9	100	50/50
12 x 38	MP - 2 30° 12.9	100	50/50
12 x 40	MP - 2 30° 12.9	100	50/50
12 x 42	MP - 2 30° 12.9	100	50/50
12 x 45	MP - 2 30° 12.9	100	50/50
12 x 50	MP - 2 30° 12.9	100	50/50
12 x 55	MP - 2 30° 12.9	50	50/50
12 x 60	MP - 2 30° 12.9	50	50/50
12 x 70	MP - 2 30° 12.9	50	50/50
12 x 80	MP - 2 30° 12.9	50	50/50
12 x 90	MP - 2 30° 12.9	50	50/50
12 x 100	MP - 2 30° 12.9	50	50/50
14 x 34	MP - 2 30° 12.9	100	50/50
14 x 39	MP - 2 30° 12.9	100	50/50
14 x 40	MP - 2 30° 12.9	50	50/50
14 x 45	MP - 2 30° 12.9	50	50/50
14 x 50	MP - 2 30° 12.9	50	50/50
14 x 60	MP - 2 30° 12.9	50	50/50

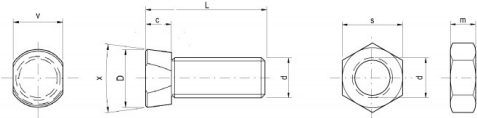
MP - 2 G (12.9)

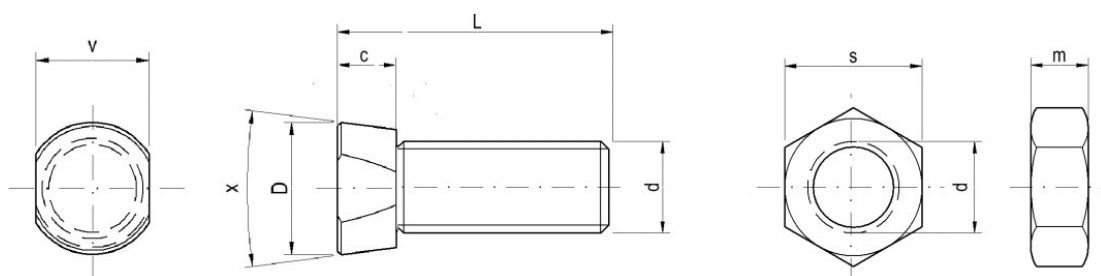
Plough bolts with conical head with nuts DIN 934 (10.9)

THE MOST PARTICULAR USE

The bolts to machinery of KVERNELAND

The most often used bolt - 12 x 36





Specifications

d	c	D	x	v	s	m
M 12	8,00	16,00	20°	13,40	19,00	10,00

The bolts MP - 2 G do fit to machinery of OEM KVERNELAND, ÖVERUM, PÖTTINGER LANDSBERG, LEMKEN, NIEMEYER, RABE, OVLAC, KÖCKERLING, FARMET, BEDNAR, ROSS, PHX, UNIA GRUDZIADZ, OPALL AGRI and many others.

Packaging

Packed in boxes / pcs		Packing without nuts	Packing with nuts
12 x 36	MP - 2 G 12.9	100	50/50

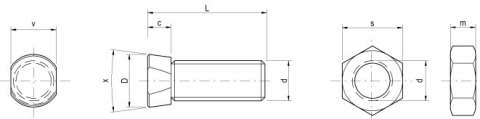
MP - 2 IT (12.9)

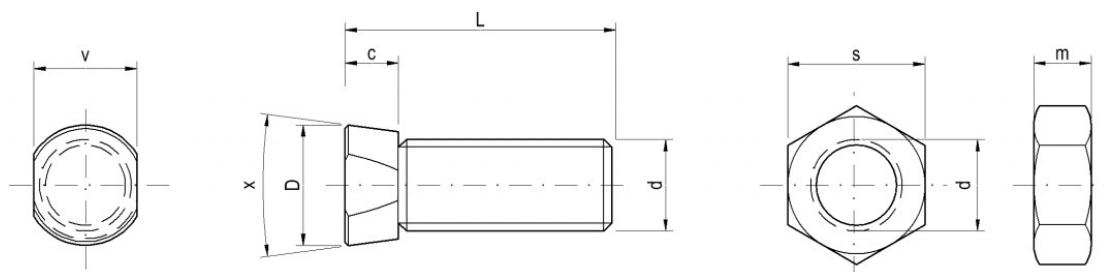
Plough bolts with conical head with nuts DIN 934 (10.9)

THE MOST PARTICULAR USE

The bolts to machinery of KVERNELAND

The most often used bolt - 12 x 37





Specifications

d	c	D	x	v	s	m
M 12	7,00	16,00	10°	14,00	19,00	10,00

The bolts MP - 2 G do fit to machinery of OEM KVERNELAND, ÖVERUM, PÖTTINGER LANDSBERG, LEMKEN, NIEMEYER, RABE, OVLAC, KÖCKERLING, FARMET, BEDNAR, ROSS, PHX, UNIA GRUDZIADZ, OPALL AGRI and many others.

Packaging

Packed in boxes / pcs		Packing without nuts	Packing with nuts
12 x 37	MP - 2 IT 12.9	100	50/50

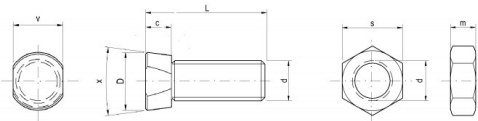
MP - 3 IHC (10.9, 12.9)

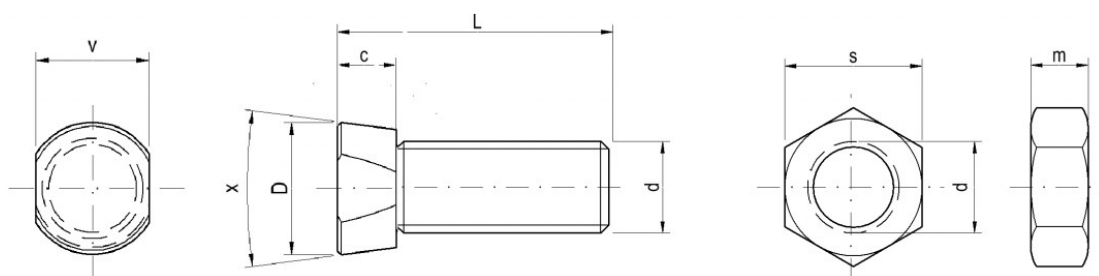
Plough bolts with conical head with nuts DIN 934 (8.8, 10.9)

THE MOST PARTICULAR USE

The bolts to machinery of GREGORIE BESSON

The most often used bolt - 12 x 35





Specifications

d	c	D	x	v	s	m
M 12	8,00	17,50	15°	14,70	19,00	10,00

The bolts MP - 3 IHC do fit to machinery of GREGORIE BESSON, OEM KVERNELAND, ÖVERUM, PÖTTINGER, LANDSBERG, LEMKEN, NIEMEYER, RABE, OVLAC, KÖCKERLING, FARMET, BEDNAR, ROSS, PHX, UNIA GRUDZIADZ, OPALL AGRI and many others.

Packaging

Packed in boxes / pcs		Packing without nuts	Packing with nuts
12 x 35	MP - 3 IHC 10.9	150	100/100
12 x 40	MP - 3 IHC 10.9	100	50/50
12 x 45	MP - 3 IHC 10.9	100	50/50
12 x 35	MP - 3 IHC 12.9	150	100/100
12 x 40	MP - 3 IHC 12.9	100	50/50
12 x 45	MP - 3 IHC 12.9	100	50/50

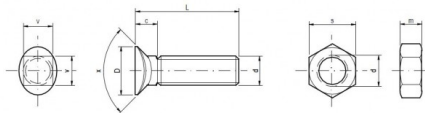
MP - 4 (4.8, 5.8)

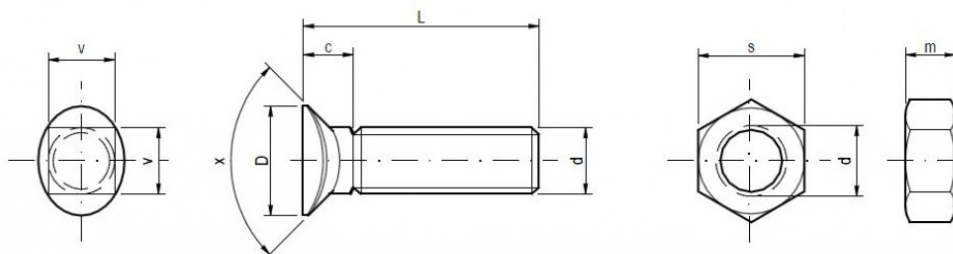
Cultivator bolts with conical head and with square neck with nuts DIN 934 (8.8)

THE MOST PARTICULAR USE

The bolts to cultivator machinery

The most often used bolt - 10 x 35, 10 x 40, 10 x 60





Specifications

d	c	D	x	v	s	m
M 10	8,00	16,5/15,5	90°	10,00	17,00	8,00
M 12	9,50	22/19,5	90°	12,00	19,00	10,00

The bolts MP - 4 do fit to machinery of OEM LEMKEN, ÖVERUM, PÖTTINGER, LANDSBERG, KVERNELAND, NIEMEYER, RABE, OVLAC, KÖCKERLING, FARMET, BEDNAR, ROSS, PHX, UNIA GRUDZIADZ, OPALL AGRI, KONGSKILDE and many others.

Packaging

Packed in boxes / pcs		Packaging without nuts	Packaging with nuts
10 x 30	MP - 4 4.8, 5.8	150	100/100
10 x 35	MP - 4 4.8, 5.8	150	100/100
10 x 37	MP - 4 4.8, 5.8	100	100/100
10 x 40	MP - 4 4.8, 5.8	100	100/100
10 x 45	MP - 4 4.8, 5.8	100	50/50
10 x 50	MP - 4 4.8, 5.8	100	50/50
10 x 55	MP - 4 4.8, 5.8	100	50/50
10 x 60	MP - 4 4.8, 5.8	150	100/100
12 x 35	MP - 4 4.8, 5.8	100	50/50

12 x 37	MP - 4 4.8, 5.8	100	50/50
12 x 40	MP - 4 4.8, 5.8	150	100/100
12 x 45	MP - 4 4.8, 5.8	150	100/100
12 x 48	MP - 4 4.8, 5.8	150	100/100
12 x 50	MP - 4 4.8, 5.8	100	100/100
12 x 55	MP - 4 4.8, 5.8	100	50/50
12 x 60	MP - 4 4.8, 5.8	90	50/50
12 x 70	MP - 4 4.8, 5.8	80	50/50
12 x 80	MP - 4 4.8, 5.8	60	50/50
12 x 90	MP - 4 4.8, 5.8	50	50/50
12 x 100	MP - 4 4.8, 5.8	50	50/50

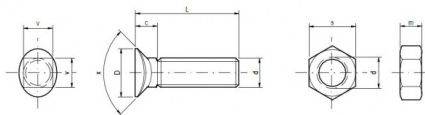
MP - 4 (8.8, 10.9, 12.9)

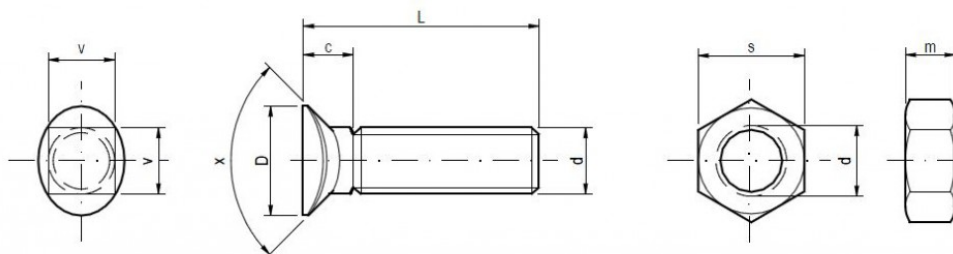
Cultivator bolts with conical head and with square neck with nuts DIN 934 (8.8, 10.9)

THE MOST PARTICULAR USE

The bolts to cultivator machinery

The most often used bolt - 10 x 35, 10 x 40, 10 x 60





Specifications

d	c	D	x	v	s	m
M 10	8,00	16,5/15,5	90°	10,00	17,00	8,00
M 12	9,50	22/19,5	90°	12,00	19,00	10,00

The bolts MP - 4 do fit to machinery of OEM LEMKEN, ÖVERUM, PÖTTINGER, LANDSBERG, KVERNELAND, NIEMEYER, RABE, OVLAC, KÖCKERLING, FARMET, BEDNAR, ROSS, PHX, UNIA GRUDZIADZ, OPALL AGRI, KONGSKILDE and many others.

Packaging

Packed in boxes / pcs		Packaging without nuts	Packaging with nuts
10 x 30	MP - 4 8.8,10.9,12.9	150	100/100
10 x 35	MP - 4 8.8,10.9,12.9	150	100/100
10 x 37	MP - 4 8.8,10.9,12.9	100	100/100
10 x 40	MP - 4 8.8,10.9,12.9	100	100/100
10 x 42	MP - 4 8.8,10.9,12.9	100	100/100
10 x 44	MP - 4 8.8,10.9,12.9	100	50/50
10 x 45	MP - 4 8.8,10.9,12.9	100	50/50
10 x 50	MP - 4 8.8,10.9,12.9	100	50/50
10 x 55	MP - 4 8.8,10.9,12.9	100	50/50
10 x 60	MP - 4 8.8,10.9,12.9	150	100/100
10 x 70	MP - 4 8.8,10.9,12.9	150	100/100

10 x 80	MP - 4 8.8,10.9,12.9	100	50/50
10 x 90	MP - 4 8.8,10.9,12.9	80	50/50
10 x 100	MP - 4 8.8,10.9,12.9	80	50/50
12 x 35	MP - 4 8.8,10.9,12.9	100	50/50
12 x 37	MP - 4 8.8,10.9,12.9	100	50/50
12 x 40	MP - 4 8.8,10.9,12.9	150	100/100
12 x 45	MP - 4 8.8,10.9,12.9	150	100/100
12 x 48	MP - 4 8.8,10.9,12.9	150	100/100
12 x 50	MP - 4 8.8,10.9,12.9	100	100/100
12 x 55	MP - 4 8.8,10.9,12.9	100	50/50
12 x 60	MP - 4 8.8,10.9,12.9	90	50/50
12 x 70	MP - 4 8.8,10.9,12.9	80	50/50
12 x 80	MP - 4 8.8,10.9,12.9	60	50/50
12 x 90	MP - 4 8.8,10.9,12.9	50	50/50
12 x 100	MP - 4 8.8,10.9,12.9	50	50/50

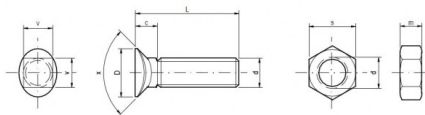
MP - 4 K (8.8 , 10.9, 12.9)

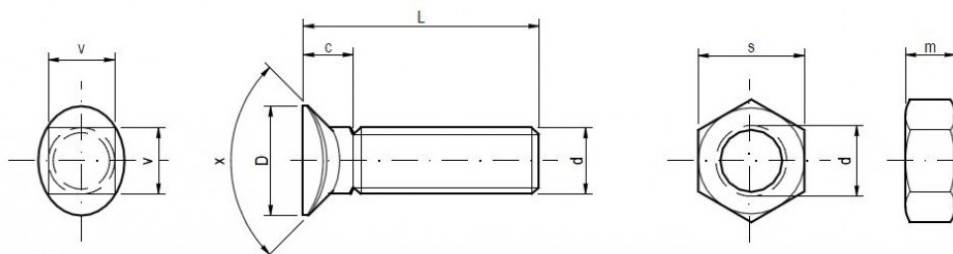
Cultivator bolts with conical head and with square neck with nuts DIN 934 (8.8, 10.9)

THE MOST PARTICULAR USE

The bolts to cultivator machinery.

The most often used bolt - 10 x 35, 10 x 40, 10 x 60





Specifications

d	c	D	x	v	s	m
M 10	7,60	18,00/16,00	90°	10,00	17,00	8,00

The bolts MP - 4 do fit to machinery of OEM LEMKEN, ÖVERUM, PÖTTINGER, LANDSBERG, KVERNELAND, NIEMEYER, RABE, OVLAC, KÖCKERLING, FARMET, BEDNAR, ROSS, PHX, UNIA GRUDZIADZ, OPALL AGRI, KONGSKILDE and many others.

Packaging

Packed in boxes / pcs		Packaging without nuts	Packaging with nuts
10 x 30	MP - 4 K 8.8,10.9,12.9	150	100/100
10 x 35	MP - 4 K 8.8,10.9,12.9	150	100/100
10 x 37	MP - 4 K 8.8,10.9,12.9	100	100/100
10 x 40	MP - 4 K 8.8,10.9,12.9	100	100/100
10 x 45	MP - 4 K 8.8,10.9,12.9	100	50/50
10 x 50	MP - 4 K 8.8,10.9,12.9	100	50/50
10 x 55	MP - 4 K 8.8,10.9,12.9	100	50/50
10 x 60	MP - 4 K 8.8,10.9,12.9	150	100/100
10 x 70	MP - 4 K 8.8,10.9,12.9	150	100/100
10 x 80	MP - 4 K 8.8,10.9,12.9	100	50/50
10 x 90	MP - 4 K 8.8,10.9,12.9	80	50/50
10 x 100	MP - 4 K 8.8,10.9,12.9	80	50/50

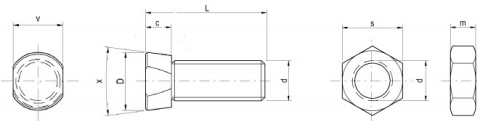
MOLBRO (10.9, 12.9)

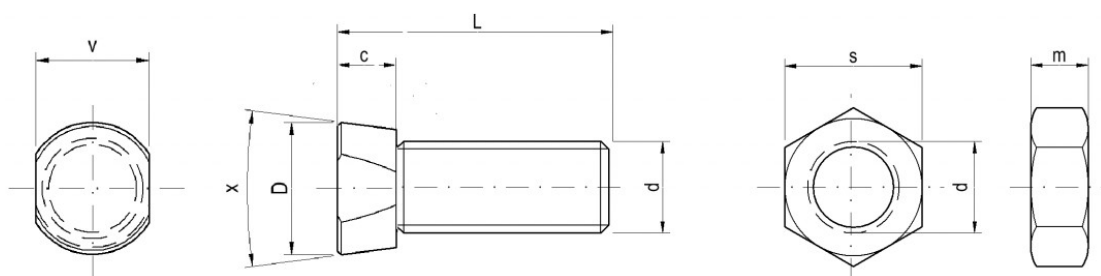
Plough bolts with conical head with nuts DIN 934 (8.8, 10.9)

THE MOST PARTICULAR USE

The bolts to machinery of MÖLBRO

The most often used bolt - MÖLBRO 12 x 34





Specifications

d	c	D	x	v	s	m
M 12	9,30	16,70	15°	13,70	19,00	10,00

The bolts MÖLBRO do fit to tillage machinery of OEM MÖLBRO, KVERNELAND, ÖVERUM, PÖTTINGER, LANDSBERG, NIEMEYER, RABE OVAL, KÖCKERLING, FARMET, BEDNAR ROSS, PHX, UNIA GRUDZIADZ, OPALL AGRI and many others.

Packaging

Packed in boxes / pcs		Packing without nuts	Packing with nuts
12 x 34	MOLBRO 10.9, 12.9	150	100/100

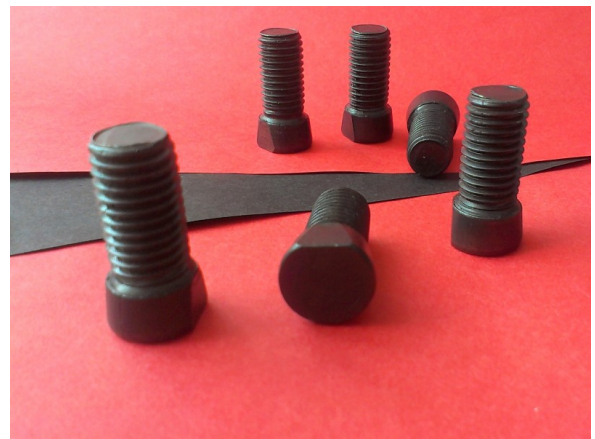
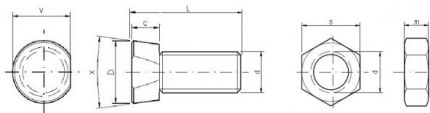
MP - 5 (10.9, 12.9)

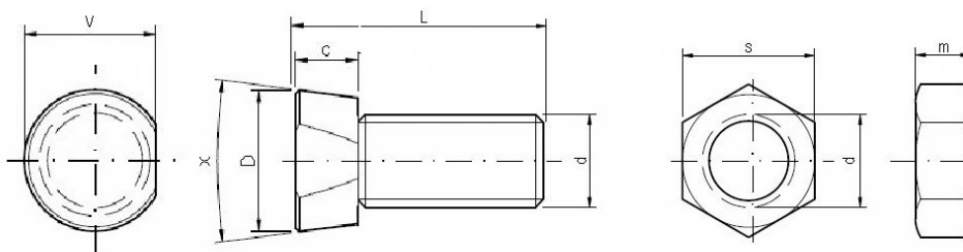
Plough bolts with conical head, with nuts DIN 934 (8.8, 10.9)

THE MOST PARTICULAR USE

The bolts to machinery of PÖTTINGER

The most often used bolt - 14 x 36, 14 x 38





Specifications

d	c	D	x	v	s	m
M14	9,70	18,50	15°	16,80	22,00	11,00

The bolts MP - 5 do fit to machinery of PÖTTINGER

Packaging

Packed in boxes		Packing without nuts	Packing with nuts
14 x 36	MP - 5 (10.9)	100	50/50
14 x 38	MP - 5 (10.9)	100	50/50
14 x 36	MP - 5 (12.9)	100	50/50
14 x 38	MP - 5 (12.9)	100	50/50

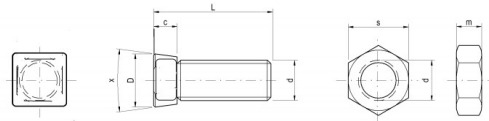
MP - T (8.8, 10.9)

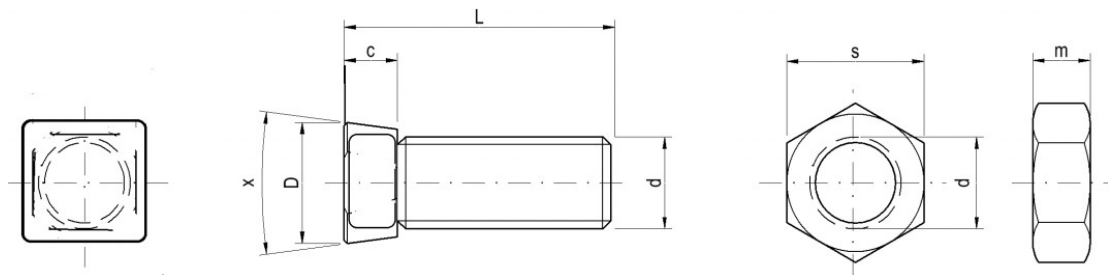
Plough bolts with square conical head with nuts DIN 934 (8.8, 10.9)

THE MOST PARTICULAR USE

The bolts to machinery of ÜNLÜ

The most often used bolt - 12 x 40





Specifications

d	c	D	x	s	m
M 12	6,50	15,00 x 15,00	30°	19,00	10,00

The bolts MP - T do fit to machinery of OEM ÜNLÜ

Packaging

Packed in boxes / pcs		Packaging without nuts	Packaging with nuts
12 x 30	MP - T (8.8, 10.9)	150	100/100
12 x 32	MP - T (8.8, 10.9)	150	100/100
12 x 35	MP - T (8.8, 10.9)	150	100/100
12 x 38	MP - T (8.8, 10.9)	100	50/50
12 x 40	MP - T (8.8, 10.9)	100	50/50
12 x 45	MP - T (8.8, 10.9)	100	50/50
12 x 50	MP - T (8.8, 10.9)	100	50/50

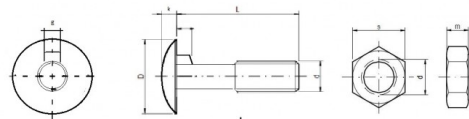
MP - 21 (10.9)

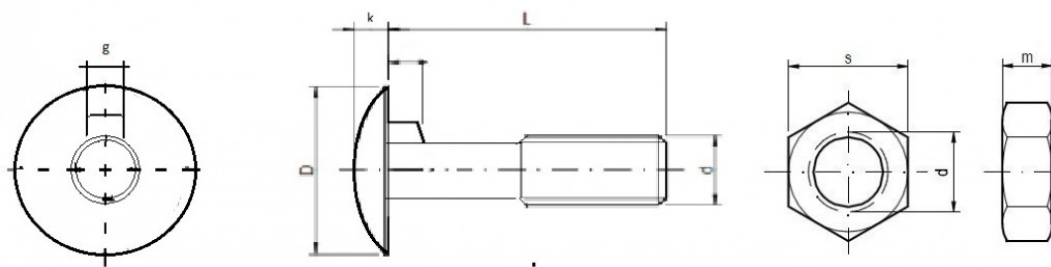
Bolts with mushroom head with feather with nuts DIN 934 (8.8)

THE MOST PARTICULAR USE

The bolts for self propelled mixers

The most often used bolt - 12 x 42





Specifications

d	c	D	g	k	s	m
M 12	4,75	24,00	6,80	5,30	19,00	10,00

The bolts MP - 21 do fit to self propelled mixers of OEM STORTI,FARESIN and many others

Packaging

Packed in boxes / pcs		Packaging without nuts	Packaging with nuts
12 x 42	MP - 21 (10.9)	100	100/100

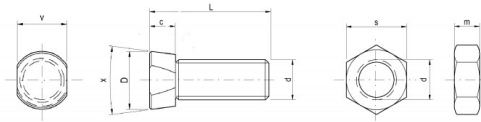
NIEMEYER 1232 N (10.9, 12.9)

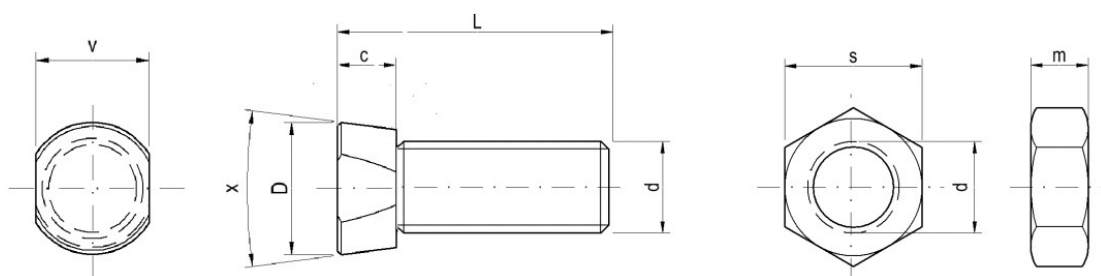
Plough bolts with conical head, with nuts DIN 934 (8.8, 10.9)

THE MOST PARTICULAR USE

The bolts for machinery of NIEMEYER

The most often used bolt - 12 x 42





Specifications

d	c	D	x	v	s	m
M 12	8,70	18,00	15°	13,60	19,00	10,00

The bolts NIEMEYER do fit to machinery of OEM NIEMEYER

Packaging

Packed in boxes / pcs		Packing without nuts	Packing with nuts
12 x 32	Niemeyer 1232N (10.9,12.9)	150	100/100

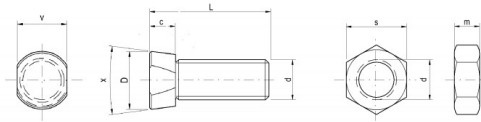
RABE OVAL (10.9, 12.9)

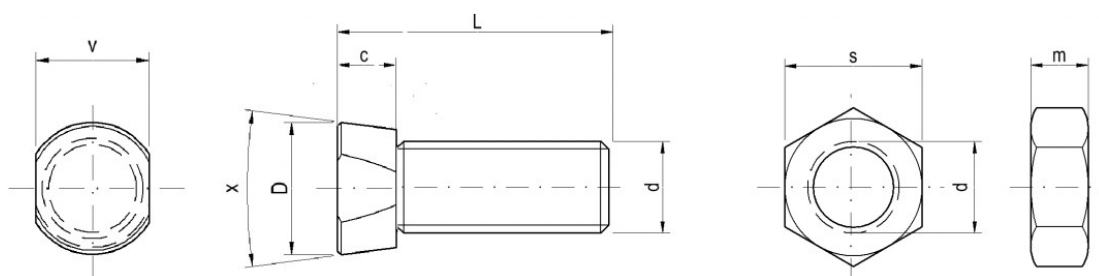
Plough bolts with conical head, with nuts DIN 934 (8.8, 10.9)

THE MOST PARTICULAR USE

The bolts to machinery of RABE

The most often used bolt - 12 x 35





Specifications

d	c	D	x	v	s	m
M 12	8,50	18,00	10°	14,00	19,00	10,00

The bolts RABE OVAL do fit to machinery of OEM RABE

Packaging

Packed in boxes / pcs		Packaging without nuts	Packaging with nuts
12 x 35	RABE OVAL (10.9, 12.9)	100	100/100
12 x 40	RABE OVAL (10.9, 12.9)	100	50/50
12 x 45	RABE OVAL (10.9, 12.9)	100	50/50

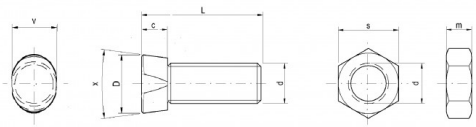
RABE OVAL K (10.9, 12.9)

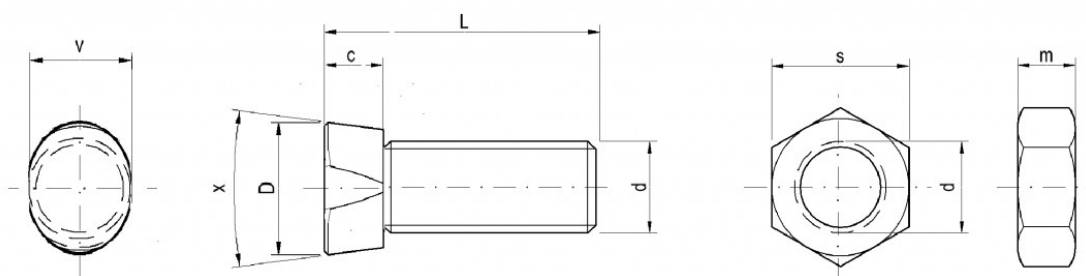
Plough bolts with conical head, with nuts DIN 934 (8.8, 10.9)

THE MOST PARTICULAR USE

The bolts to machinery of RABE

The most often used bolt - 12 x 35





Specifications

d	c	D	x	v	s	m
M 12	8,50	18,00	10°	14,00	19,00	10,00

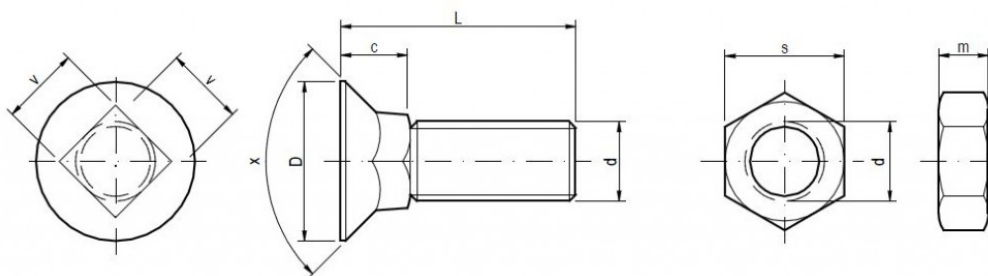
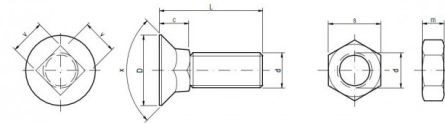
The bolts RABE OVAL do fit to machinery of OEM RABE

Packaging

Packed in boxes / pcs		Packing without nuts	Packing with nuts
12 x 30	Rabe Oval K (10.9, 12.9)	150	100/100
12 x 35	Rabe Oval K 10.9, 12.9	150	100/100
12 x 37	Rabe Oval K 10.9, 12.9	100	50/50
12 x 40	Rabe Oval K 10.9, 12.9	100	50/50
12 x 45	Rabe Oval K 10.9, 12.9	100	50/50

UNI 6104 (8.8, 10.9)

Plough bolts with square neck with nuts DIN 934 (8.8)



Specifications

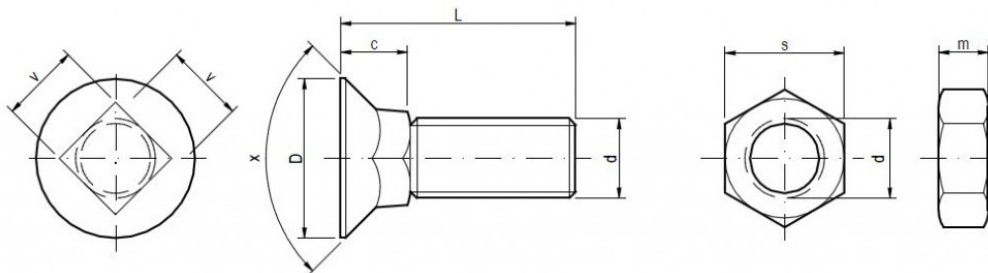
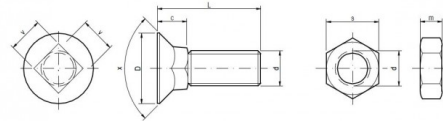
d	c	D	x	v	s	m
M 12	12,00	24,00	90° + 5°	12,00	19,00	10,00
M 14	14,00	28,00	90° + 5°	14,00	22,00	11,00

Packaging

Packed in boxes / pcs		Packaging without nuts	Packaging with nuts
12 x 30	UNI 6104 (8.8, 10.9)	100	50/50
12 x 40	UNI 6104 (8.8, 10.9)	150	100/100
12 x 50	UNI 6104 (8.8, 10.9)	100	100/100
12 x 60	UNI 6104 (8.8, 10.9)	90	50/50
12 x 70	UNI 6104 (8.8, 10.9)	80	50/50
12 x 80	UNI 6104 (8.8, 10.9)	60	50/50
14 x 35	UNI 6104 (8.8, 10.9)	50	50/50
14 x 40	UNI 6104 (8.8, 10.9)	50	50/50
14 x 45	UNI 6104 (8.8, 10.9)	50	50/50
14 x 50	UNI 6104 (8.8, 10.9)	50	50/50
14 x 60	UNI 6104 (8.8, 10.9)	50	50/50
14 x 70	UNI 6104 (8.8, 10.9)	50	50/50
14 x 80	UNI 6104 (8.8, 10.9)	50	50/50

UNI 6104 (12.9)

Plough bolts with square neck with nuts DIN 934 (10.9)



Specifications

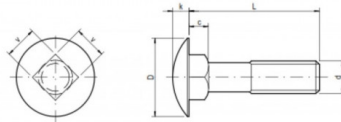
d	c	D	x	v	s	m
M 12	12,00	24,00	90° + 5°	12,00	19,00	10,00
M 14	14,00	28,00	90° + 5°	14,00	22,00	11,00

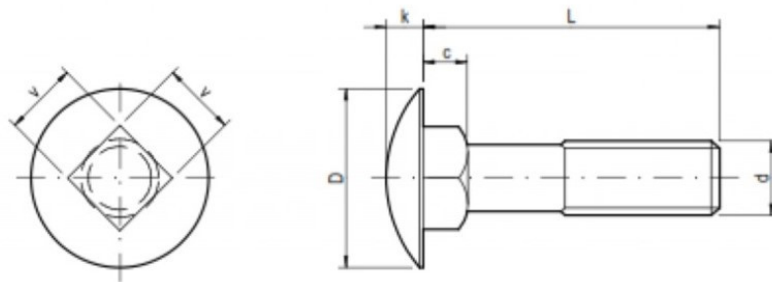
Packaging

Packed in boxes / pcs		Packaging without nuts	Packaging with nuts
12 x 30	UNI 6104 (12.9)	100	50/50
12 x 40	UNI 6104 (12.9)	150	100/100
12 x 50	UNI 6104 (12.9)	100	100/100
12 x 60	UNI 6104 (12.9)	90	50/50
12 x 70	UNI 6104 (12.9)	80	50/50
12 x 80	UNI 6104 (12.9)	60	50/50
14 x 35	UNI 6104 (12.9)	50	50/50
14 x 40	UNI 6104 (12.9)	50	50/50
14 x 45	UNI 6104 (12.9)	50	50/50
14 x 50	UNI 6104 (12.9)	50	50/50
14 x 60	UNI 6104 (12.9)	50	50/50
14 x 70	UNI 6104 (12.9)	50	50/50
14 x 80	UNI 6104 (12.9)	50	50/50

DIN 603 (8.8, 10.9)

The bolts with large cup head and square neck for harvestors and plows with nuts DIN 934 (8.8)





Specifications

d	c	k	D	v	s
M 10	6,00	5,00	24,00	10,00	17,00
M 12	8,00	6,80	30,00	12,00	19,00

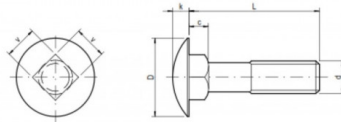
Packaging

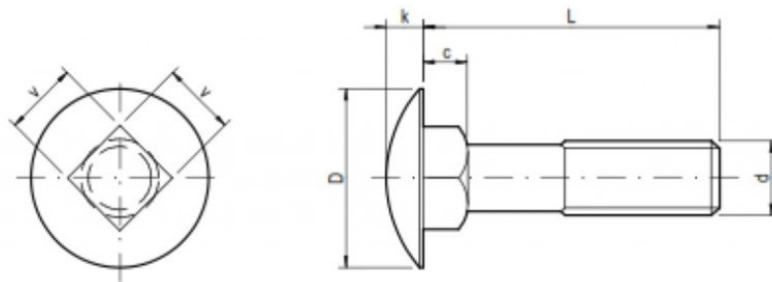
Packed in boxes / pcs		Packaging without nuts	Packaging with nuts
10 x 16	DIN 603 (8.8, 10.9)	200	150/150
10 x 20	DIN 603 (8.8, 10.9)	150	100/100
10 x 25	DIN 603 (8.8, 10.9)	150	100/100
10 x 30	DIN 603 (8.8, 10.9)	100	100/100
10 x 35	DIN 603 (8.8, 10.9)	200	150/150
10 x 40	DIN 603 (8.8, 10.9)	200	150/150
10 x 45	DIN 603 (8.8, 10.9)	150	150/150
10 x 50	DIN 603 (8.8, 10.9)	150	100/100
10 x 55	DIN 603 (8.8, 10.9)	150	100/100
10 x 60	DIN 603 (8.8, 10.9)	100	100/100
10 x 65	DIN 603 (8.8, 10.9)	100	100/100
10 x 70	DIN 603 (8.8, 10.9)	100	100/100
10 x 75	DIN 603 (8.8, 10.9)	100	100/100
10 x 80	DIN 603 (8.8, 10.9)	100	50/50
10 x 85	DIN 603 (8.8, 10.9)	80	50/50
10 x 90	DIN 603 (8.8, 10.9)	80	50/50
10 x 95	DIN 603 (8.8, 10.9)	60	50/50
10 x 100	DIN 603 (8.8, 10.9)	60	50/50
12 x 25	DIN 603 (8.8, 10.9)	150	100/100
12 x 30	DIN 603 (8.8, 10.9)	150	100/100
12 x 35	DIN 603 (8.8, 10.9)	100	100/100
12 x 40	DIN 603 (8.8, 10.9)	100	100/100
12 x 45	DIN 603 (8.8, 10.9)	100	100/100
12 x 50	DIN 603 (8.8, 10.9)	80	50/50
12 x 55	DIN 603 (8.8, 10.9)	80	50/50
12 x 60	DIN 603 (8.8, 10.9)	80	50/50
12 x 65	DIN 603 (8.8, 10.9)	80	50/50
12 x 70	DIN 603 (8.8, 10.9)	60	50/50
12 x 75	DIN 603 (8.8, 10.9)	60	50/50
12 x 80	DIN 603 (8.8, 10.9)	60	50/50
12 x 85	DIN 603 (8.8, 10.9)	50	50/50
12 x 90	DIN 603 (8.8, 10.9)	50	50/50
12 x 95	DIN 603 (8.8, 10.9)	50	50/50

12 x 100	DIN 603 (8.8, 10.9)	50	50/50
----------	---------------------	----	-------

DIN 603 (12.9)

The bolts with large cup head and square neck for harvestors and plows with nuts DIN 934 (10.9)





Specifications

d	c	k	D	v	s
M 10	6,00	5,00	24,00	10,00	17,00
M 12	8,00	6,80	30,00	12,00	19,00

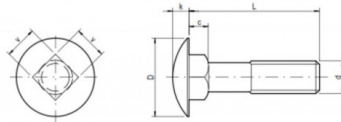
Packaging

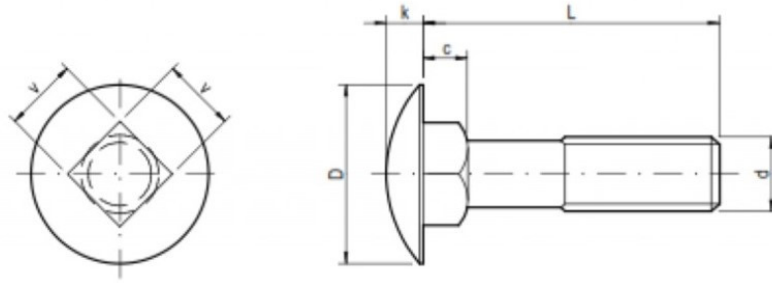
Packed in boxes / pcs		Packaging without nuts	Packaging with nuts
10 x 16	DIN 603 (12.9)	200	150/150
10 x 20	DIN 603 (12.9)	150	100/100
10 x 25	DIN 603 (12.9)	150	100/100
10 x 30	DIN 603 (12.9)	100	100/100
10 x 35	DIN 603 (12.9)	200	150/150
10 x 40	DIN 603 (12.9)	200	150/150
10 x 45	DIN 603 (12.9)	150	150/150
10 x 50	DIN 603 (12.9)	150	100/100
10 x 55	DIN 603 (12.9)	150	100/100
10 x 60	DIN 603 (12.9)	100	100/100
10 x 65	DIN 603 (12.9)	100	100/100
10 x 70	DIN 603 (12.9)	100	100/100
10 x 75	DIN 603 (12.9)	100	100/100
10 x 80	DIN 603 (12.9)	100	50/50
10 x 85	DIN 603 (12.9)	80	50/50
10 x 90	DIN 603 (12.9)	80	50/50
10 x 95	DIN 603 (12.9)	60	50/50
10 x 100	DIN 603 (12.9)	60	50/50
12 x 25	DIN 603 (12.9)	150	100/100
12 x 30	DIN 603 (12.9)	150	100/100
12 x 35	DIN 603 (12.9)	100	100/100
12 x 40	DIN 603 (12.9)	100	100/100
12 x 45	DIN 603 (12.9)	100	100/100
12 x 50	DIN 603 (12.9)	80	50/50
12 x 55	DIN 603 (12.9)	80	50/50
12 x 60	DIN 603 (12.9)	80	50/50
12 x 65	DIN 603 (12.9)	80	50/50
12 x 70	DIN 603 (12.9)	60	50/50
12 x 75	DIN 603 (12.9)	60	50/50
12 x 80	DIN 603 (12.9)	60	50/50
12 x 85	DIN 603 (12.9)	50	50/50
12 x 90	DIN 603 (12.9)	50	50/50
12 x 95	DIN 603 (12.9)	50	50/50

12 x 100	DIN 603 (12.9)	50	50/50
----------	----------------	----	-------

DIN 603 (4.8)

ČSN ISO 8677 (4.8) The bolts with large cup head and square neck





Specifications

d	c	k	D	v
M 5	3,50	3,00	13,00	5,00
M 6	4,00	3,50	16,00	6,00
M 8	5,00	4,50	20,00	8,00
M 10	6,00	5,00	24,00	10,00
M 12	8,00	6,50	30,00	12,00

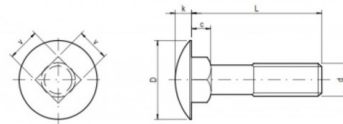
Packaging

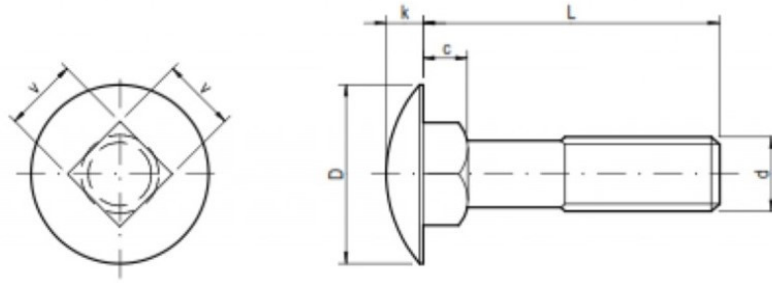
Packed in boxes/pcs		Packaging/pcs
5 x 12	DIN 603 (4.8)	900
5 x 16	DIN 603 (4.8)	900
5 x 20	DIN 603 (4.8)	800
5 x 25	DIN 603 (4.8)	600
5 x 30	DIN 603 (4.8)	500
5 x 35	DIN 603 (4.8)	400
5 x 40	DIN 603 (4.8)	400
5 x 45	DIN 603 (4.8)	300
5 x 50	DIN 603 (4.8)	300
5 x 55	DIN 603 (4.8)	250
5 x 60	DIN 603 (4.8)	200
6 x 12	DIN 603 (4.8)	600
6 x 16	DIN 603 (4.8)	600
6 x 20	DIN 603 (4.8)	500
6 x 25	DIN 603 (4.8)	400
6 x 30	DIN 603 (4.8)	300
6 x 35	DIN 603 (4.8)	300
6 x 40	DIN 603 (4.8)	250
6 x 45	DIN 603 (4.8)	200
6 x 50	DIN 603 (4.8)	200
6 x 55	DIN 603 (4.8)	300
6 x 60	DIN 603 (4.8)	300
6 x 65	DIN 603 (4.8)	300
6 x 70	DIN 603 (4.8)	250
6 x 75	DIN 603 (4.8)	200
6 x 80	DIN 603 (4.8)	200
6 x 85	DIN 603 (4.8)	150
8 x 15	DIN 603 (4.8)	300
8 x 16	DIN 603 (4.8)	300

8 x 20	DIN 603 (4.8)	250
8 x 25	DIN 603 (4.8)	250
8 x 30	DIN 603 (4.8)	200
8 x 35	DIN 603 (4.8)	150
8 x 40	DIN 603 (4.8)	150
8 x 45	DIN 603 (4.8)	250
8 x 50	DIN 603 (4.8)	250
8 x 55	DIN 603 (4.8)	200
8 x 60	DIN 603 (4.8)	200
8 x 65	DIN 603 (4.8)	200
8 x 70	DIN 603 (4.8)	150
8 x 75	DIN 603 (4.8)	150
8 x 80	DIN 603 (4.8)	150
8 x 85	DIN 603 (4.8)	100
8 x 90	DIN 603 (4.8)	100
8 x 95	DIN 603 (4.8)	100
8 x 100	DIN 603 (4.8)	100
10 x 16	DIN 603 (4.8)	200
10 x 20	DIN 603 (4.8)	150
10 x 25	DIN 603 (4.8)	150
10 x 30	DIN 603 (4.8)	100
10 x 35	DIN 603 (4.8)	200
10 x 40	DIN 603 (4.8)	200
10 x 45	DIN 603 (4.8)	150
10 x 50	DIN 603 (4.8)	150
10 x 55	DIN 603 (4.8)	150
10 x 60	DIN 603 (4.8)	100
10 x 65	DIN 603 (4.8)	100
10 x 70	DIN 603 (4.8)	100
10 x 75	DIN 603 (4.8)	100
10 x 80	DIN 603 (4.8)	100
10 x 85	DIN 603 (4.8)	80
10 x 90	DIN 603 (4.8)	80
10 x 95	DIN 603 (4.8)	60
10 x 100	DIN 603 (4.8)	60
12 x 25	DIN 603 (4.8)	150
12 x 30	DIN 603 (4.8)	150
12 x 35	DIN 603 (4.8)	100
12 x 40	DIN 603 (4.8)	100
12 x 45	DIN 603 (4.8)	100
12 x 50	DIN 603 (4.8)	80
12 x 55	DIN 603 (4.8)	80
12 x 60	DIN 603 (4.8)	80
12 x 65	DIN 603 (4.8)	80
12 x 70	DIN 603 (4.8)	60
12 x 75	DIN 603 (4.8)	60
12 x 80	DIN 603 (4.8)	60
12 x 85	DIN 603 (4.8)	50
12 x 90	DIN 603 (4.8)	50
12 x 95	DIN 603 (4.8)	50
12 x 100	DIN 603 (4.8)	50

DIN 603 (8.8, 10.9)

ČSN ISO 8677 (8.8, 10.9) The bolts with large cup head and square neck





Specifications

d	c	k	D	v
M 6	4,00	3,50	16,00	6,00
M 8	5,00	4,50	20,00	8,00
M 10	6,00	5,00	24,00	10,00
M 12	8,00	6,50	30,00	12,00

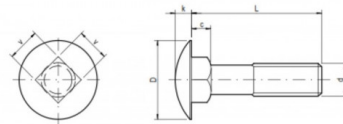
Packaging

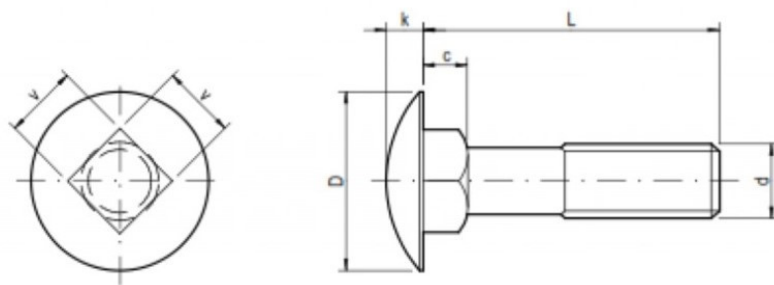
Packed in boxes/pcs		Packaging/pcs
6 x 12	DIN 603 (8.8, 10.9)	600
6 x 16	DIN 603 (8.8, 10.9)	600
6 x 20	DIN 603 (8.8, 10.9)	500
6 x 25	DIN 603 (8.8, 10.9)	400
6 x 30	DIN 603 (8.8, 10.9)	300
6 x 35	DIN 603 (8.8, 10.9)	300
6 x 40	DIN 603 (8.8, 10.9)	250
6 x 45	DIN 603 (8.8, 10.9)	200
6 x 50	DIN 603 (8.8, 10.9)	200
6 x 55	DIN 603 (8.8, 10.9)	300
6 x 60	DIN 603 (8.8, 10.9)	300
6 x 65	DIN 603 (8.8, 10.9)	300
6 x 70	DIN 603 (8.8, 10.9)	250
6 x 75	DIN 603 (8.8, 10.9)	200
6 x 80	DIN 603 (8.8, 10.9)	200
6 x 85	DIN 603 (8.8, 10.9)	150
8 x 15	DIN 603 (8.8, 10.9)	300
8 x 16	DIN 603 (8.8, 10.9)	300
8 x 20	DIN 603 (8.8, 10.9)	250
8 x 25	DIN 603 (8.8, 10.9)	250
8 x 30	DIN 603 (8.8, 10.9)	200
8 x 35	DIN 603 (8.8, 10.9)	150
8 x 40	DIN 603 (8.8, 10.9)	150
8 x 45	DIN 603 (8.8, 10.9)	250
8 x 50	DIN 603 (8.8, 10.9)	250
8 x 55	DIN 603 (8.8, 10.9)	200
8 x 60	DIN 603 (8.8, 10.9)	200
8 x 65	DIN 603 (8.8, 10.9)	200
8 x 70	DIN 603 (8.8, 10.9)	150
8 x 75	DIN 603 (8.8, 10.9)	150
8 x 80	DIN 603 (8.8, 10.9)	150
8 x 85	DIN 603 (8.8, 10.9)	100

8 x 90	DIN 603 (8.8, 10.9)	100
8 x 95	DIN 603 (8.8, 10.9)	100
8 x 100	DIN 603 (8.8, 10.9)	100
10 x 16	DIN 603 (8.8, 10.9)	200
10 x 20	DIN 603 (8.8, 10.9)	150
10 x 25	DIN 603 (8.8, 10.9)	150
10 x 30	DIN 603 (8.8, 10.9)	100
10 x 35	DIN 603 (8.8, 10.9)	200
10 x 40	DIN 603 (8.8, 10.9)	200
10 x 45	DIN 603 (8.8, 10.9)	150
10 x 50	DIN 603 (8.8, 10.9)	150
10 x 55	DIN 603 (8.8, 10.9)	150
10 x 60	DIN 603 (8.8, 10.9)	100
10 x 65	DIN 603 (8.8, 10.9)	100
10 x 70	DIN 603 (8.8, 10.9)	100
10 x 75	DIN 603 (8.8, 10.9)	100
10 x 80	DIN 603 (8.8, 10.9)	100
10 x 85	DIN 603 (8.8, 10.9)	80
10 x 90	DIN 603 (8.8, 10.9)	80
10 x 95	DIN 603 (8.8, 10.9)	60
10 x 100	DIN 603 (8.8, 10.9)	60
12 x 25	DIN 603 (8.8, 10.9)	150
12 x 30	DIN 603 (8.8, 10.9)	150
12 x 35	DIN 603 (8.8, 10.9)	100
12 x 40	DIN 603 (8.8, 10.9)	100
12 x 45	DIN 603 (8.8, 10.9)	100
12 x 50	DIN 603 (8.8, 10.9)	80
12 x 55	DIN 603 (8.8, 10.9)	80
12 x 60	DIN 603 (8.8, 10.9)	80
12 x 65	DIN 603 (8.8, 10.9)	80
12 x 70	DIN 603 (8.8, 10.9)	60
12 x 75	DIN 603 (8.8, 10.9)	60
12 x 80	DIN 603 (8.8, 10.9)	60
12 x 85	DIN 603 (8.8, 10.9)	50
12 x 90	DIN 603 (8.8, 10.9)	50
12 x 95	DIN 603 (8.8, 10.9)	50
12 x 100	DIN 603 (8.8, 10.9)	50

DIN 603 (12.9)

ČSN ISO 8677 (12.9) The bolts with large cup head and square neck





Specifications

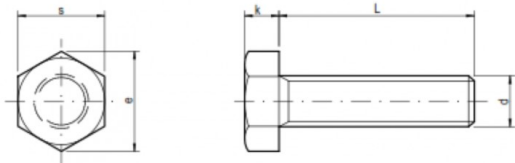
d	c	k	D	v
M 10	6,00	5,00	24,00	10,00
M 12	8,00	6,50	30,00	12,00

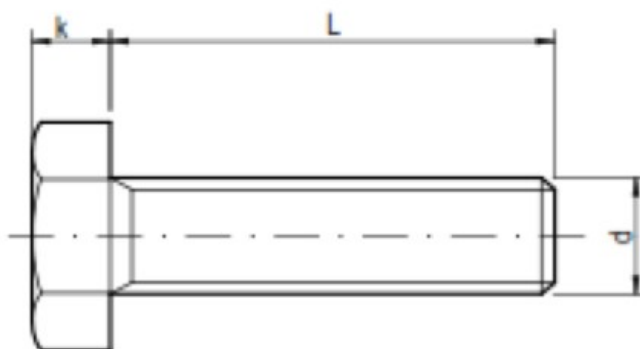
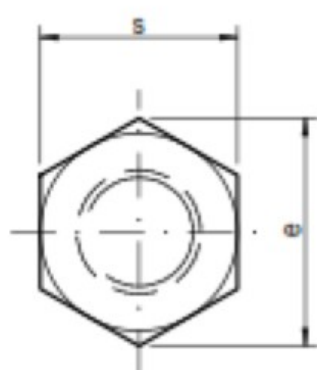
Packaging

Packed in boxes/pcs		Packaging/pcs
10 x 16	DIN 603 (12.9)	200
10 x 20	DIN 603 (12.9)	150
10 x 25	DIN 603 (12.9)	150
10 x 30	DIN 603 (12.9)	100
10 x 35	DIN 603 (12.9)	200
10 x 40	DIN 603 (12.9)	200
10 x 45	DIN 603 (12.9)	150
10 x 50	DIN 603 (12.9)	150
10 x 55	DIN 603 (12.9)	150
10 x 60	DIN 603 (12.9)	100
10 x 65	DIN 603 (12.9)	100
10 x 70	DIN 603 (12.9)	100
10 x 75	DIN 603 (12.9)	100
10 x 80	DIN 603 (12.9)	100
10 x 85	DIN 603 (12.9)	80
10 x 90	DIN 603 (12.9)	80
10 x 95	DIN 603 (12.9)	60
10 x 100	DIN 603 (12.9)	60
12 x 25	DIN 603 (12.9)	150
12 x 30	DIN 603 (12.9)	150
12 x 35	DIN 603 (12.9)	100
12 x 40	DIN 603 (12.9)	100
12 x 45	DIN 603 (12.9)	100
12 x 50	DIN 603 (12.9)	80
12 x 55	DIN 603 (12.9)	80
12 x 60	DIN 603 (12.9)	80
12 x 65	DIN 603 (12.9)	80
12 x 70	DIN 603 (12.9)	60
12 x 75	DIN 603 (12.9)	60
12 x 80	DIN 603 (12.9)	60
12 x 85	DIN 603 (12.9)	50
12 x 90	DIN 603 (12.9)	50
12 x 95	DIN 603 (12.9)	50
12 x 100	DIN 603 (12.9)	50

DIN 933 (5.8)

The bolts with hexagon head with full thread





Specifications

d	k	s	e
M 6	4,00	10,00	11,05
M 8	5,50	13,00	14,38
M 10	7,00	17,00	18,72
M 12	8,00	19,00	20,88

Packaging

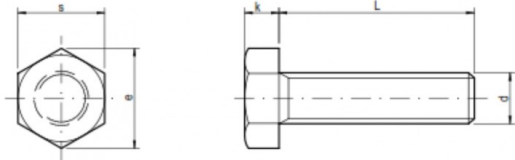
Packed in boxes/pcs		Packaging/pcs
6 x 10	DIN 933 (5.8)	1000
6 x 12	DIN 933 (5.8)	1000
6 x 14	DIN 933 (5.8)	900
6 x 16	DIN 933 (5.8)	800
6 x 18	DIN 933 (5.8)	800
6 x 20	DIN 933 (5.8)	700
6 x 22	DIN 933 (5.8)	600
6 x 25	DIN 933 (5.8)	500
6 x 30	DIN 933 (5.8)	400
6 x 35	DIN 933 (5.8)	400

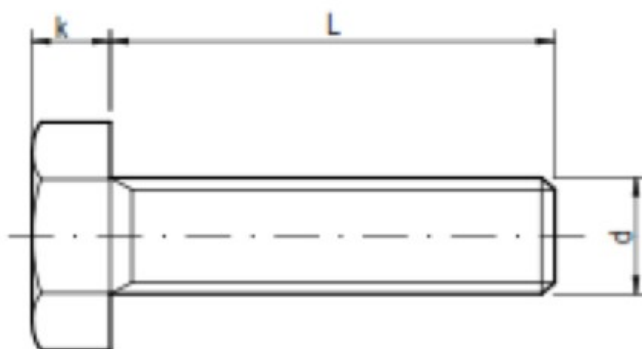
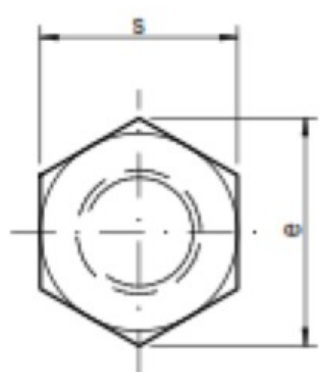
6 x 40	DIN 933 (5.8)	300
6 x 45	DIN 933 (5.8)	300
6 x 50	DIN 933 (5.8)	200
6 x 55	DIN 933 (5.8)	200
6 x 60	DIN 933 (5.8)	200
8 x 12	DIN 933 (5.8)	500
8 x 14	DIN 933 (5.8)	400
8 x 16	DIN 933 (5.8)	400
8 x 18	DIN 933 (5.8)	400
8 x 20	DIN 933 (5.8)	300
8 x 22	DIN 933 (5.8)	300
8 x 25	DIN 933 (5.8)	300
8 x 30	DIN 933 (5.8)	250
8 x 35	DIN 933 (5.8)	200
8 x 40	DIN 933 (5.8)	200
8 x 45	DIN 933 (5.8)	150
8 x 50	DIN 933 (5.8)	150
8 x 55	DIN 933 (5.8)	100
8 x 60	DIN 933 (5.8)	100
8 x 65	DIN 933 (5.8)	200
8 x 70	DIN 933 (5.8)	200
8 x 75	DIN 933 (5.8)	150
8 x 80	DIN 933 (5.8)	150
8 x 85	DIN 933 (5.8)	100
8 x 90	DIN 933 (5.8)	100
8 x 95	DIN 933 (5.8)	100
8 x 100	DIN 933 (5.8)	100
10 x 16	DIN 933 (5.8)	200
10 x 20	DIN 933 (5.8)	200
10 x 22	DIN 933 (5.8)	150
10 x 25	DIN 933 (5.8)	150
10 x 30	DIN 933 (5.8)	150
10 x 35	DIN 933 (5.8)	100
10 x 40	DIN 933 (5.8)	100
10 x 45	DIN 933 (5.8)	100
10 x 50	DIN 933 (5.8)	100
10 x 55	DIN 933 (5.8)	150
10 x 60	DIN 933 (5.8)	150
10 x 65	DIN 933 (5.8)	150
10 x 70	DIN 933 (5.8)	100
10 x 75	DIN 933 (5.8)	100
10 x 80	DIN 933 (5.8)	100
10 x 85	DIN 933 (5.8)	100
10 x 90	DIN 933 (5.8)	80
10 x 95	DIN 933 (5.8)	80
10 x 100	DIN 933 (5.8)	80
12 x 16	DIN 933 (5.8)	300
12 x 20	DIN 933 (5.8)	250
12 x 25	DIN 933 (5.8)	250
12 x 30	DIN 933 (5.8)	200

12 x 35	DIN 933 (5.8)	150
12 x 40	DIN 933 (5.8)	150
12 x 45	DIN 933 (5.8)	150
12 x 50	DIN 933 (5.8)	100
12 x 55	DIN 933 (5.8)	100
12 x 60	DIN 933 (5.8)	100
12 x 65	DIN 933 (5.8)	100
12 x 70	DIN 933 (5.8)	80
12 x 75	DIN 933 (5.8)	80
12 x 80	DIN 933 (5.8)	80
12 x 85	DIN 933 (5.8)	60
12 x 90	DIN 933 (5.8)	60
12 x 95	DIN 933 (5.8)	50
12 x 100	DIN 933 (5.8)	50

ISO 4017 (5.8)

The bolts with hexagon head with full thread





Specifications

d	k	s	e
M 10	6,40	16,00	17,77
M 12	7,50	18,00	20,03

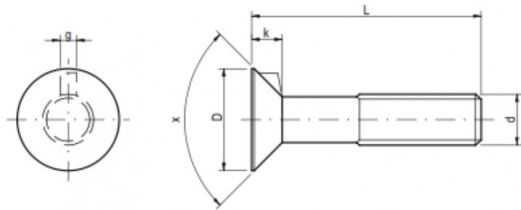
Packaging

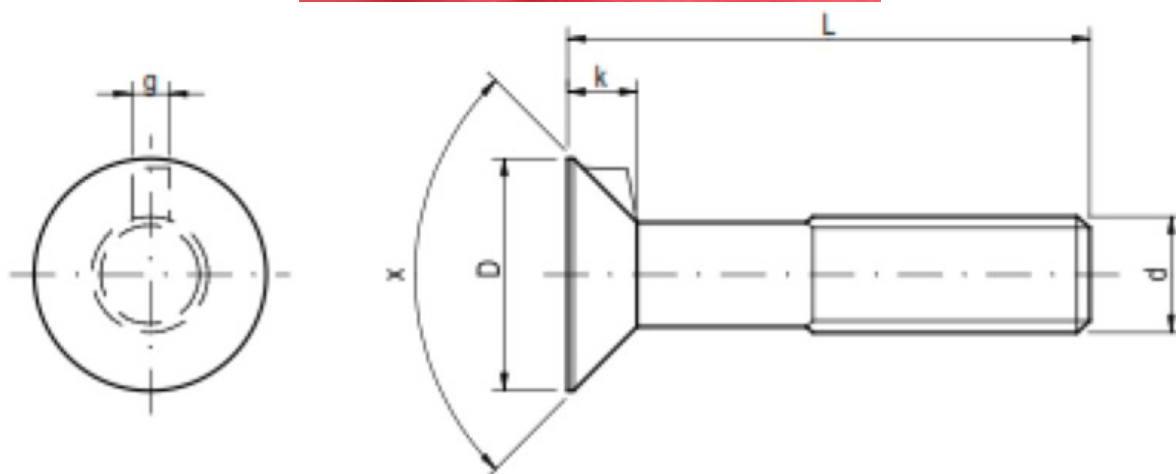
Packed in boxes/pcs		Packaging/pcs
10 x 16	ISO 4017 (5.8)	200
10 x 22	ISO 4017 (5.8)	200
10 x 20	ISO 4017 (5.8)	200
10 x 25	ISO 4017 (5.8)	150
10 x 30	ISO 4017 (5.8)	150
10 x 35	ISO 4017 (5.8)	100
10 x 40	ISO 4017 (5.8)	100
10 x 45	ISO 4017 (5.8)	100
10 x 50	ISO 4017 (5.8)	100
10 x 55	ISO 4017 (5.8)	150
10 x 60	ISO 4017 (5.8)	150
10 x 65	ISO 4017 (5.8)	150

10 x 70	ISO 4017 (5.8)	100
10 x 75	ISO 4017 (5.8)	100
10 x 80	ISO 4017 (5.8)	100
10 x 90	ISO 4017 (5.8)	80
10 x 100	ISO 4017 (5.8)	80
12 x 16	ISO 4017 (5.8)	300
12 x 18	ISO 4017 (5.8)	250
12 x 20	ISO 4017 (5.8)	250
12 x 22	ISO 4017 (5.8)	250
12 x 25	ISO 4017 (5.8)	250
12 x 30	ISO 4017 (5.8)	200
12 x 35	ISO 4017 (5.8)	150
12 x 40	ISO 4017 (5.8)	150
12 x 45	ISO 4017 (5.8)	150
12 x 50	ISO 4017 (5.8)	100
12 x 55	ISO 4017 (5.8)	100
12 x 60	ISO 4017 (5.8)	100
12 x 65	ISO 4017 (5.8)	100
12 x 70	ISO 4017 (5.8)	80
12 x 75	ISO 4017 (5.8)	80
12 x 80	ISO 4017 (5.8)	80
12 x 90	ISO 4017 (5.8)	60
12 x 100	ISO 4017 (5.8)	50

DIN 604 (4.8, 8.8)

ČSN 02 1324 (4.8, 8.8) The flat countersunk head nib bolts





Specifications

d	k	D	x	g
M 6	4,00	12,00	90°	2,50
M 8	5,00	16,00	90°	3,00
M 10	6,00	19,00	90°	3,20
M 12	7,00	24,00	90°	3,60

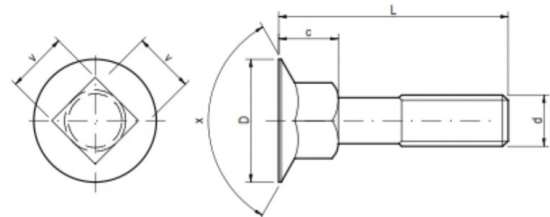
Packaging

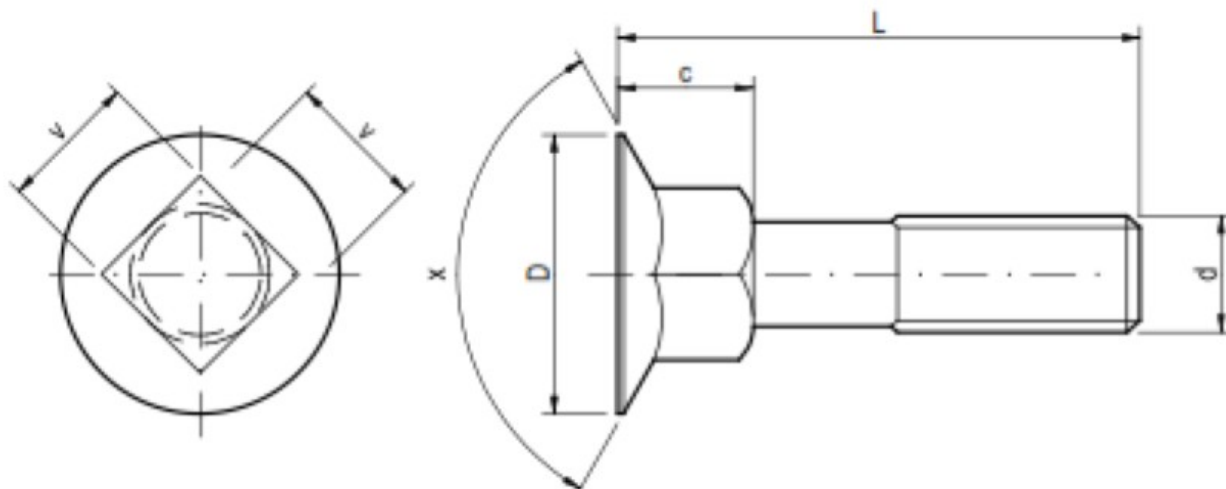
Packed in boxes/pcs		Packaging/pcs
6 x 20	DIN 604 (4.8, 8.8)	500
6 x 25	DIN 604 (4.8, 8.8)	400
6 x 30	DIN 604 (4.8, 8.8)	300
6 x 35	DIN 604 (4.8, 8.8)	300
6 x 40	DIN 604 (4.8, 8.8)	250
6 x 45	DIN 604 (4.8, 8.8)	200
6 x 50	DIN 604 (4.8, 8.8)	200
6 x 55	DIN 604 (4.8, 8.8)	300
6 x 60	DIN 604 (4.8, 8.8)	300
6 x 65	DIN 604 (4.8, 8.8)	300

6 x 70	DIN 604 (4.8, 8.8)	250
6 x 75	DIN 604 (4.8, 8.8)	200
6 x 80	DIN 604 (4.8, 8.8)	200
8 x 20	DIN 604 (4.8, 8.8)	250
8 x 25	DIN 604 (4.8, 8.8)	250
8 x 30	DIN 604 (4.8, 8.8)	200
8 x 35	DIN 604 (4.8, 8.8)	150
8 x 40	DIN 604 (4.8, 8.8)	150
8 x 45	DIN 604 (4.8, 8.8)	250
8 x 50	DIN 604 (4.8, 8.8)	250
8 x 55	DIN 604 (4.8, 8.8)	200
8 x 60	DIN 604 (4.8, 8.8)	200
8 x 65	DIN 604 (4.8, 8.8)	200
8 x 70	DIN 604 (4.8, 8.8)	150
8 x 75	DIN 604 (4.8, 8.8)	150
8 x 80	DIN 604 (4.8, 8.8)	150
8 x 90	DIN 604 (4.8, 8.8)	100
8 x 100	DIN 604 (4.8, 8.8)	100
10 x 20	DIN 604 (4.8, 8.8)	150
10 x 25	DIN 604 (4.8, 8.8)	150
10 x 30	DIN 604 (4.8, 8.8)	100
10 x 35	DIN 604 (4.8, 8.8)	200
10 x 40	DIN 604 (4.8, 8.8)	200
10 x 45	DIN 604 (4.8, 8.8)	150
10 x 50	DIN 604 (4.8, 8.8)	150
10 x 55	DIN 604 (4.8, 8.8)	150
10 x 60	DIN 604 (4.8, 8.8)	100
10 x 65	DIN 604 (4.8, 8.8)	100
10 x 70	DIN 604 (4.8, 8.8)	100
10 x 75	DIN 604 (4.8, 8.8)	100
10 x 80	DIN 604 (4.8, 8.8)	100
10 x 90	DIN 604 (4.8, 8.8)	80
10 x 100	DIN 604 (4.8, 8.8)	60
12 x 20	DIN 604 (4.8, 8.8)	150
12 x 25	DIN 604 (4.8, 8.8)	150
12 x 30	DIN 604 (4.8, 8.8)	100
12 x 35	DIN 604 (4.8, 8.8)	100
12 x 40	DIN 604 (4.8, 8.8)	150
12 x 45	DIN 604 (4.8, 8.8)	150
12 x 50	DIN 604 (4.8, 8.8)	100
12 x 55	DIN 604 (4.8, 8.8)	100
12 x 60	DIN 604 (4.8, 8.8)	100
12 x 65	DIN 604 (4.8, 8.8)	90
12 x 70	DIN 604 (4.8, 8.8)	80
12 x 75	DIN 604 (4.8, 8.8)	80
12 x 80	DIN 604 (4.8, 8.8)	60
12 x 90	DIN 604 (4.8, 8.8)	50
12 x 100	DIN 604 (4.8, 8.8)	50

DIN 605 (4.8, 8.8, 10.9)

ČSN 02 1327 (4.8, 8.8, 10.9) The countersunk square bolts with long square





Specifications

d	c	D	x	v
M 6	7,00	16,00	120°	6,00
M 8	9,00	20,00	120°	8,00
M 10	11,00	24,00	120°	10,00
M 12	14,00	28,00	120°	12,00

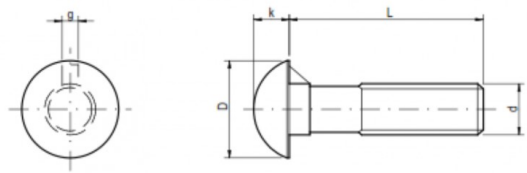
Packaging

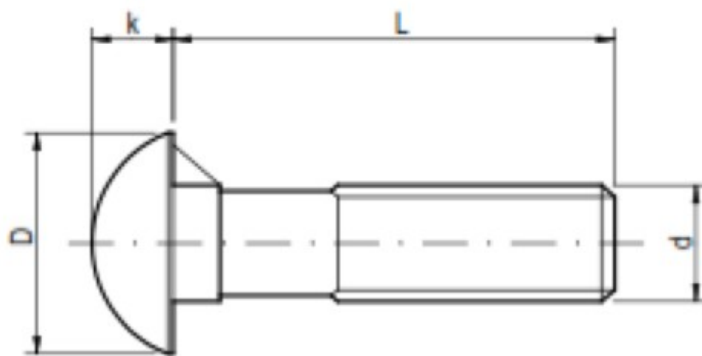
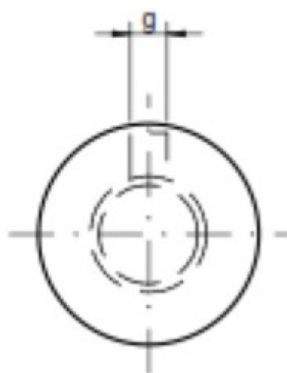
Packed in boxes/pcs		Packaging/pcs
6 x 30	DIN 605 (4.8, 8.8, 10.9)	300
6 x 35	DIN 605 (4.8, 8.8, 10.9)	300
6 x 40	DIN 605 (4.8, 8.8, 10.9)	250
6 x 45	DIN 605 (4.8, 8.8, 10.9)	200
6 x 50	DIN 605 (4.8, 8.8, 10.9)	200
6 x 55	DIN 605 (4.8, 8.8, 10.9)	300
6 x 60	DIN 605 (4.8, 8.8, 10.9)	300
8 x 30	DIN 605 (4.8, 8.8, 10.9)	200
8 x 35	DIN 605 (4.8, 8.8, 10.9)	150
8 x 40	DIN 605 (4.8, 8.8, 10.9)	150
8 x 45	DIN 605 (4.8, 8.8, 10.9)	250
8 x 50	DIN 605 (4.8, 8.8, 10.9)	250
8 x 55	DIN 605 (4.8, 8.8, 10.9)	200
8 x 60	DIN 605 (4.8, 8.8, 10.9)	200
8 x 65	DIN 605 (4.8, 8.8, 10.9)	200
8 x 70	DIN 605 (4.8, 8.8, 10.9)	150
8 x 75	DIN 605 (4.8, 8.8, 10.9)	150
8 x 80	DIN 605 (4.8, 8.8, 10.9)	150
10 x 40	DIN 605 (4.8, 8.8, 10.9)	200
10 x 45	DIN 605 (4.8, 8.8, 10.9)	150
10 x 50	DIN 605 (4.8, 8.8, 10.9)	150
10 x 55	DIN 605 (4.8, 8.8, 10.9)	150
10 x 60	DIN 605 (4.8, 8.8, 10.9)	100
10 x 65	DIN 605 (4.8, 8.8, 10.9)	100
10 x 70	DIN 605 (4.8, 8.8, 10.9)	100
10 x 75	DIN 605 (4.8, 8.8, 10.9)	100
10 x 80	DIN 605 (4.8, 8.8, 10.9)	100

10 x 90	DIN 605 (4.8, 8.8, 10.9)	80
10 x 100	DIN 605 (4.8, 8.8, 10.9)	60
12 x 50	DIN 605 (4.8, 8.8, 10.9)	100
12 x 55	DIN 605 (4.8, 8.8, 10.9)	80
12 x 60	DIN 605 (4.8, 8.8, 10.9)	80
12 x 65	DIN 605 (4.8, 8.8, 10.9)	80
12 x 70	DIN 605 (4.8, 8.8, 10.9)	60
12 x 75	DIN 605 (4.8, 8.8, 10.9)	60
12 x 80	DIN 605 (4.8, 8.8, 10.9)	60
12 x 90	DIN 605 (4.8, 8.8, 10.9)	50
12 x 100	DIN 605 (4.8, 8.8, 10.9)	50

DIN 607 (4.8)

ČSN 02 1315 (4.8) The round - headed bolts with feather for metal





Specifications

d	k	D	g
M 6	4,50	12,00	2,50
M 8	6,00	16,00	3,00
M 10	7,00	19,00	3,20
M 12	9,00	24,00	3,80

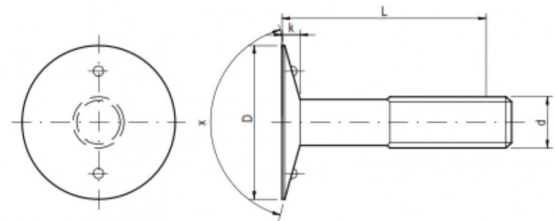
Packaging

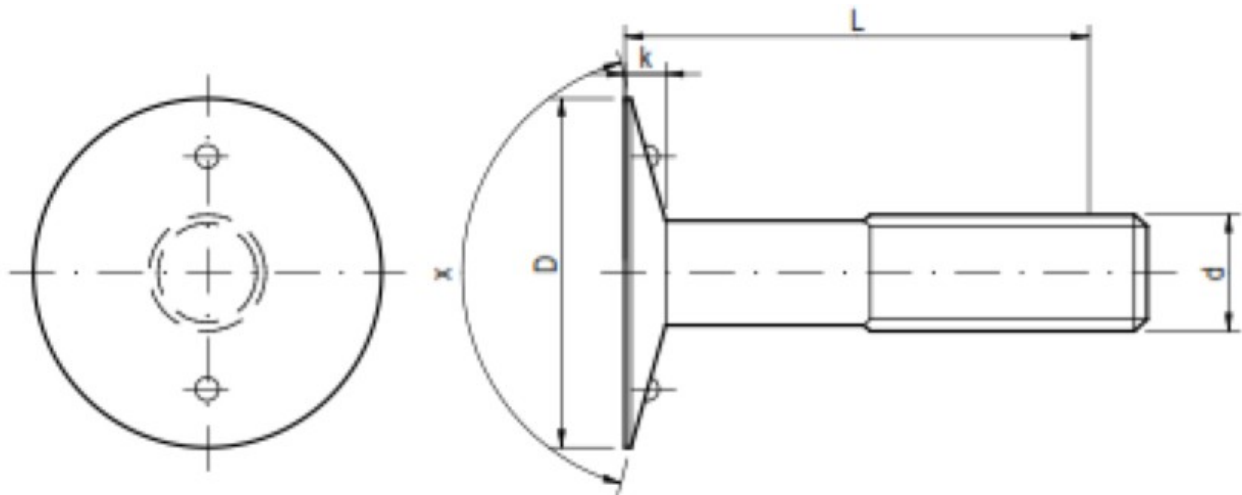
Packed in boxes/pcs		Packaging/pcs
6 x 16	DIN 607 (4.8)	500
6 x 20	DIN 607 (4.8)	500
6 x 25	DIN 607 (4.8)	400
6 x 30	DIN 607 (4.8)	300
6 x 35	DIN 607 (4.8)	300
6 x 40	DIN 607 (4.8)	250
6 x 45	DIN 607 (4.8)	250
6 x 50	DIN 607 (4.8)	200
6 x 55	DIN 607 (4.8)	300
6 x 60	DIN 607 (4.8)	300
6 x 65	DIN 607 (4.8)	300
6 x 70	DIN 607 (4.8)	250
6 x 75	DIN 607 (4.8)	200
6 x 80	DIN 607 (4.8)	200
8 x 16	DIN 607 (4.8)	250
8 x 20	DIN 607 (4.8)	250
8 x 25	DIN 607 (4.8)	250
8 x 30	DIN 607 (4.8)	200
8 x 35	DIN 607 (4.8)	150
8 x 40	DIN 607 (4.8)	150
8 x 45	DIN 607 (4.8)	250
8 x 50	DIN 607 (4.8)	250
8 x 55	DIN 607 (4.8)	200
8 x 60	DIN 607 (4.8)	200
8 x 65	DIN 607 (4.8)	200
8 x 70	DIN 607 (4.8)	150
8 x 75	DIN 607 (4.8)	150
8 x 80	DIN 607 (4.8)	150

8 x 90	DIN 607 (4.8)	100
8 x 100	DIN 607 (4.8)	100
10 x 25	DIN 607 (4.8)	150
10 x 30	DIN 607 (4.8)	100
10 x 35	DIN 607 (4.8)	200
10 x 40	DIN 607 (4.8)	200
10 x 45	DIN 607 (4.8)	150
10 x 50	DIN 607 (4.8)	150
10 x 55	DIN 607 (4.8)	150
10 x 60	DIN 607 (4.8)	100
10 x 65	DIN 607 (4.8)	100
10 x 70	DIN 607 (4.8)	100
10 x 75	DIN 607 (4.8)	100
10 x 80	DIN 607 (4.8)	100
10 x 90	DIN 607 (4.8)	80
10 x 100	DIN 607 (4.8)	60
12 x 30	DIN 607 (4.8)	150
12 x 35	DIN 607 (4.8)	100
12 x 40	DIN 607 (4.8)	100
12 x 45	DIN 607 (4.8)	100
12 x 50	DIN 607 (4.8)	100
12 x 55	DIN 607 (4.8)	80
12 x 60	DIN 607 (4.8)	80
12 x 65	DIN 607 (4.8)	80
12 x 70	DIN 607 (4.8)	60
12 x 75	DIN 607 (4.8)	60
12 x 80	DIN 607 (4.8)	60
12 x 90	DIN 607 (4.8)	50
12 x 100	DIN 607 (4.8)	50

ČSN 02 1329 (4.8)

ČSN 02 1329 (4.8) The bolts with pin - feathered countersunk head for leather belts





Specifications

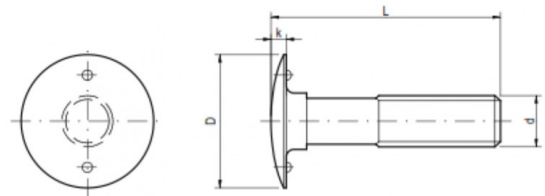
d	k	D	x
M 6	2,00	17,00	140°
M 8	2,80	23,00	140°
M 10	3,50	29,00	140°

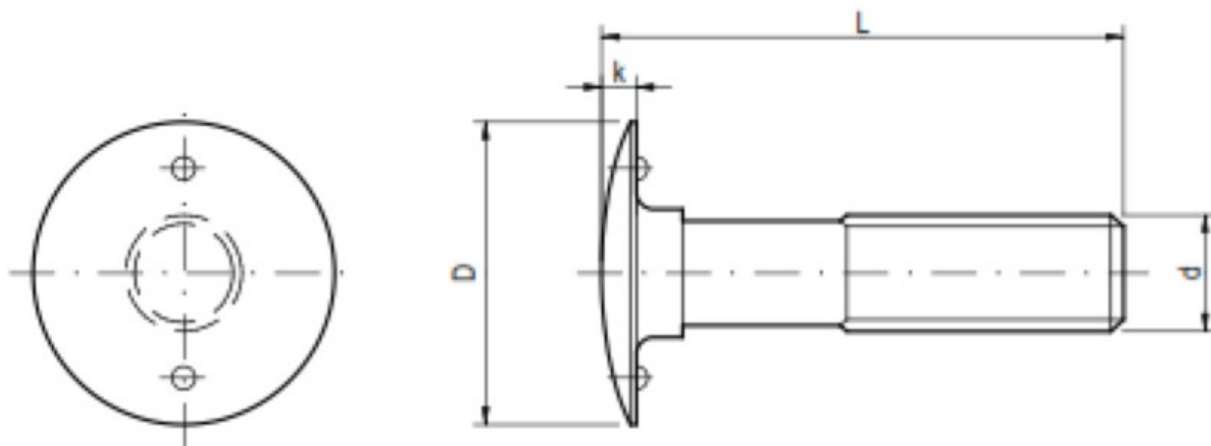
Packaging

Packed in boxes/pcs		Packaging/pcs
6 x 16	ČSN 02 1329 (4.8)	500
6 x 20	ČSN 02 1329 (4.8)	400
6 x 25	ČSN 02 1329 (4.8)	300
6 x 30	ČSN 02 1329 (4.8)	250
6 x 35	ČSN 02 1329 (4.8)	250
6 x 40	ČSN 02 1329 (4.8)	200
8 x 20	ČSN 02 1329 (4.8)	200
8 x 25	ČSN 02 1329 (4.8)	200
8 x 30	ČSN 02 1329 (4.8)	150
8 x 35	ČSN 02 1329 (4.8)	100
8 x 40	ČSN 02 1329 (4.8)	100
8 x 55	ČSN 02 1329 (4.8)	200
10 x 25	ČSN 02 1329 (4.8)	100
10 x 30	ČSN 02 1329 (4.8)	100
10 x 35	ČSN 02 1329 (4.8)	150
10 x 40	ČSN 02 1329 (4.8)	150
10 x 45	ČSN 02 1329 (4.8)	150

ČSN 02 1318 (4.8)

ČSN 02 1318 (4.8) The bolts with pin - feathered snap head for leather belts





Specifications

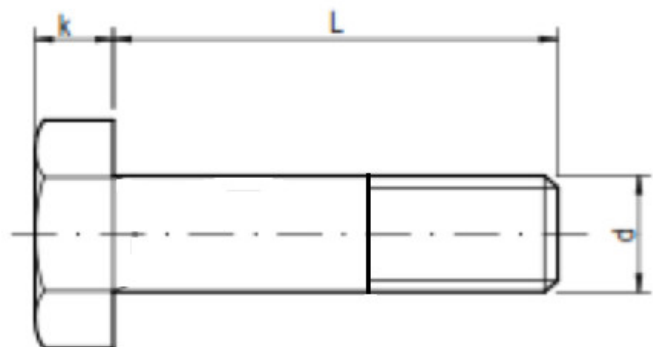
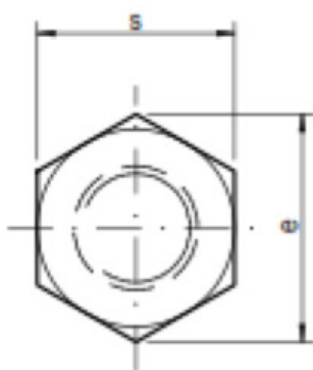
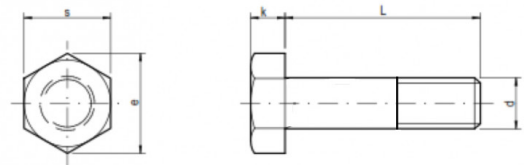
d	k	D
M 6	1,60	16,00
M 8	2,40	21,00
M 10	3,00	26,00

Packaging

Packed in boxes/pcs		Packaging/pcs
6 x 16	ČSN 02 1318 (4.8)	500
6 x 20	ČSN 02 1318 (4.8)	400
6 x 25	ČSN 02 1318 (4.8)	300
6 x 30	ČSN 02 1318 (4.8)	250
6 x 35	ČSN 02 1318 (4.8)	250
8 x 20	ČSN 02 1318 (4.8)	200
8 x 25	ČSN 02 1318 (4.8)	200
8 x 30	ČSN 02 1318 (4.8)	150
8 x 35	ČSN 02 1318 (4.8)	100
8 x 40	ČSN 02 1318 (4.8)	100
8 x 55	ČSN 02 1318 (4.8)	200
10 x 25	ČSN 02 1318 (4.8)	100
10 x 30	ČSN 02 1318 (4.8)	100
10 x 35	ČSN 02 1318 (4.8)	150
10 x 40	ČSN 02 1318 (4.8)	150
10 x 45	ČSN 02 1318 (4.8)	150

DIN 960 (5.8, 8.8, 10.9, 12.9)

Hexagonal bolts with partially threaded body with fine thread



Specifications

d	k	s	e
M 8	5,30	13,00	14,38
M 10	6,40	17,00	18,9
M 12	7,50	19,00	21,1
M 14	8,80	22,00	24,49
M16	10,00	24,00	26,75
M 18	11,50	27,00	30,14
M 20	12,50	30,00	33,53

Packaging

Size	Standard	Pcs/box	MOQ/pcs
8 x 1 x 25	DIN 960 5.8, 8.8, 10.9, 12.9	300	6 000
8 x 1 x 28	DIN 960 5.8, 8.8, 10.9, 12.9	250	6 000
8 x 1 x 30	DIN 960 5.8, 8.8, 10.9, 12.9	250	6 000
8 x 1 x 35	DIN 960 5.8, 8.8, 10.9, 12.9	200	6 000
8 x 1 x 40	DIN 960 5.8, 8.8, 10.9, 12.9	200	6 000
8 x 1 x 45	DIN 960 5.8, 8.8, 10.9, 12.9	150	6 000
8 x 1 x 50	DIN 960 5.8, 8.8, 10.9, 12.9	150	6 000
8 x 1 x 55	DIN 960 5.8, 8.8, 10.9, 12.9	100	6 000
8 x 1 x 60	DIN 960 5.8, 8.8, 10.9, 12.9	100	6 000
8 x 1 x 65	DIN 960 5.8, 8.8, 10.9, 12.9	200	6 000
8 x 1 x 70	DIN 960 5.8, 8.8, 10.9, 12.9	200	6 000
8 x 1 x 75	DIN 960 5.8, 8.8, 10.9, 12.9	150	6 000
8 x 1 x 80	DIN 960 5.8, 8.8, 10.9, 12.9	150	6 000
8 x 1 x 85	DIN 960 5.8, 8.8, 10.9, 12.9	100	6 000
8 x 1 x 90	DIN 960 5.8, 8.8, 10.9, 12.9	100	6 000
8 x 1 x 95	DIN 960 5.8, 8.8, 10.9, 12.9	100	6 000
10 x 1 x 30	DIN 960 5.8, 8.8, 10.9, 12.9	150	5 000
10 x 1 x 35	DIN 960 5.8, 8.8, 10.9, 12.9	100	5 000
10 x 1 x 40	DIN 960 5.8, 8.8, 10.9, 12.9	100	5 000
10 x 1 x 45	DIN 960 5.8, 8.8, 10.9, 12.9	100	5 000
10 x 1 x 50	DIN 960 5.8, 8.8, 10.9, 12.9	100	5 000
10 x 1 x 55	DIN 960 5.8, 8.8, 10.9, 12.9	150	5 000
10 x 1 x 60	DIN 960 5.8, 8.8, 10.9, 12.9	150	5 000
10 x 1 x 65	DIN 960 5.8, 8.8, 10.9, 12.9	150	5 000
10 x 1 x 70	DIN 960 5.8, 8.8, 10.9, 12.9	100	5 000
10 x 1 x 75	DIN 960 5.8, 8.8, 10.9, 12.9	100	5 000
10 x 1 x 80	DIN 960 5.8, 8.8, 10.9, 12.9	100	5 000
10 x 1 x 85	DIN 960 5.8, 8.8, 10.9, 12.9	100	5 000
10 x 1 x 90	DIN 960 5.8, 8.8, 10.9, 12.9	80	5 000
10 x 1 x 95	DIN 960 5.8, 8.8, 10.9, 12.9	80	5 000
10 x 1 x 100	DIN 960 5.8, 8.8, 10.9, 12.9	80	5 000
10 x 1 x 105	DIN 960 5.8, 8.8, 10.9, 12.9	50	5 000
10 x 1 x 110	DIN 960 5.8, 8.8, 10.9, 12.9	50	5 000
10 x 1 x 115	DIN 960 5.8, 8.8, 10.9, 12.9	50	5 000
10 x 1 x 120	DIN 960 5.8, 8.8, 10.9, 12.9	50	5 000
10 x 1,25 x 30	DIN 960 5.8, 8.8, 10.9, 12.9	150	5 000
10 x 1,25 x 35	DIN 960 5.8, 8.8, 10.9, 12.9	100	5 000

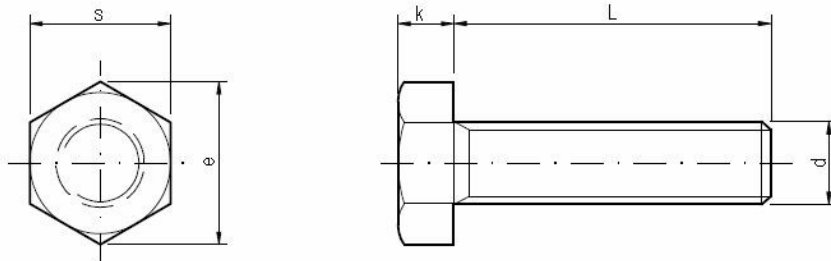
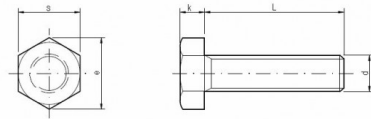
10 x 1,25 x 40	DIN 960 5.8, 8.8, 10.9, 12.9	100	5 000
10 x 1,25 x 45	DIN 960 5.8, 8.8, 10.9, 12.9	100	5 000
10 x 1,25 x 50	DIN 960 5.8, 8.8, 10.9, 12.9	100	5 000
10 x 1,25 x 55	DIN 960 5.8, 8.8, 10.9, 12.9	150	5 000
10 x 1,25 x 60	DIN 960 5.8, 8.8, 10.9, 12.9	150	5 000
10 x 1,25 x 65	DIN 960 5.8, 8.8, 10.9, 12.9	150	5 000
10 x 1,25 x 70	DIN 960 5.8, 8.8, 10.9, 12.9	100	5 000
10 x 1,25 x 75	DIN 960 5.8, 8.8, 10.9, 12.9	100	5 000
10 x 1,25 x 80	DIN 960 5.8, 8.8, 10.9, 12.9	100	5 000
10 x 1,25 x 85	DIN 960 5.8, 8.8, 10.9, 12.9	100	5 000
10 x 1,25 x 90	DIN 960 5.8, 8.8, 10.9, 12.9	80	5 000
10 x 1,25 x 95	DIN 960 5.8, 8.8, 10.9, 12.9	80	5 000
10 x 1,25 x 100	DIN 960 5.8, 8.8, 10.9, 12.9	80	5 000
10 x 1,25 x 105	DIN 960 5.8, 8.8, 10.9, 12.9	50	5 000
10 x 1,25 x 110	DIN 960 5.8, 8.8, 10.9, 12.9	50	5 000
10 x 1,25 x 115	DIN 960 5.8, 8.8, 10.9, 12.9	50	5 000
10 x 1,25 x 120	DIN 960 5.8, 8.8, 10.9, 12.9	50	5 000
12 x 1,25 x 30	DIN 960 5.8, 8.8, 10.9, 12.9	200	3 000
12 x 1,25 x 35	DIN 960 5.8, 8.8, 10.9, 12.9	150	3 000
12 x 1,25 x 40	DIN 960 5.8, 8.8, 10.9, 12.9	150	3 000
12 x 1,25 x 45	DIN 960 5.8, 8.8, 10.9, 12.9	150	3 000
12 x 1,25 x 50	DIN 960 5.8, 8.8, 10.9, 12.9	100	3 000
12 x 1,25 x 55	DIN 960 5.8, 8.8, 10.9, 12.9	100	3 000
12 x 1,25 x 60	DIN 960 5.8, 8.8, 10.9, 12.9	100	3 000
12 x 1,25 x 65	DIN 960 5.8, 8.8, 10.9, 12.9	100	3 000
12 x 1,25 x 70	DIN 960 5.8, 8.8, 10.9, 12.9	80	3 000
12 x 1,25 x 75	DIN 960 5.8, 8.8, 10.9, 12.9	80	3 000
12 x 1,25 x 80	DIN 960 5.8, 8.8, 10.9, 12.9	80	3 000
12 x 1,25 x 85	DIN 960 5.8, 8.8, 10.9, 12.9	60	3 000
12 x 1,25 x 90	DIN 960 5.8, 8.8, 10.9, 12.9	60	3 000
12 x 1,25 x 95	DIN 960 5.8, 8.8, 10.9, 12.9	50	3 000
12 x 1,25 x 100	DIN 960 5.8, 8.8, 10.9, 12.9	50	3 000
12 x 1,25 x 105	DIN 960 5.8, 8.8, 10.9, 12.9	50	3 000
12 x 1,25 x 110	DIN 960 5.8, 8.8, 10.9, 12.9	50	3 000
12 x 1,25 x 115	DIN 960 5.8, 8.8, 10.9, 12.9	25	3 000
12 x 1,25 x 120	DIN 960 5.8, 8.8, 10.9, 12.9	25	3 000
12 x 1,5 x 30	DIN 960 5.8, 8.8, 10.9, 12.9	200	3 000
12 x 1,5 x 35	DIN 960 5.8, 8.8, 10.9, 12.9	150	3 000
12 x 1,5 x 40	DIN 960 5.8, 8.8, 10.9, 12.9	150	3 000
12 x 1,5 x 45	DIN 960 5.8, 8.8, 10.9, 12.9	150	3 000
12 x 1,5 x 50	DIN 960 5.8, 8.8, 10.9, 12.9	100	3 000
12 x 1,5 x 55	DIN 960 5.8, 8.8, 10.9, 12.9	100	3 000
12 x 1,5 x 60	DIN 960 5.8, 8.8, 10.9, 12.9	100	3 000
12 x 1,5 x 65	DIN 960 5.8, 8.8, 10.9, 12.9	100	3 000
12 x 1,5 x 70	DIN 960 5.8, 8.8, 10.9, 12.9	80	3 000
12 x 1,5 x 75	DIN 960 5.8, 8.8, 10.9, 12.9	80	3 000
12 x 1,5 x 80	DIN 960 5.8, 8.8, 10.9, 12.9	80	3 000
12 x 1,5 x 85	DIN 960 5.8, 8.8, 10.9, 12.9	60	3 000
12 x 1,5 x 90	DIN 960 5.8, 8.8, 10.9, 12.9	60	3 000
12 x 1,5 x 95	DIN 960 5.8, 8.8, 10.9, 12.9	50	3 000
12 x 1,5 x 100	DIN 960 5.8, 8.8, 10.9, 12.9	50	3 000

12 x 1,5 x 105	DIN 960 5.8, 8.8, 10.9, 12.9	50	3 000
12 x 1,5 x 110	DIN 960 5.8, 8.8, 10.9, 12.9	50	3 000
12 x 1,5 x 115	DIN 960 5.8, 8.8, 10.9, 12.9	25	3 000
12 x 1,5 x 120	DIN 960 5.8, 8.8, 10.9, 12.9	25	3 000
14 x 1,5 x 30	DIN 960 5.8, 8.8, 10.9, 12.9	50	3 000
14 x 1,5 x 35	DIN 960 5.8, 8.8, 10.9, 12.9	50	3 000
14 x 1,5 x 40	DIN 960 5.8, 8.8, 10.9, 12.9	50	3 000
14 x 1,5 x 45	DIN 960 5.8, 8.8, 10.9, 12.9	50	3 000
14 x 1,5 x 50	DIN 960 5.8, 8.8, 10.9, 12.9	50	3 000
14 x 1,5 x 55	DIN 960 5.8, 8.8, 10.9, 12.9	50	3 000
14 x 1,5 x 60	DIN 960 5.8, 8.8, 10.9, 12.9	50	3 000
14 x 1,5 x 65	DIN 960 5.8, 8.8, 10.9, 12.9	50	3 000
14 x 1,5 x 70	DIN 960 5.8, 8.8, 10.9, 12.9	50	3 000
14 x 1,5 x 75	DIN 960 5.8, 8.8, 10.9, 12.9	50	3 000
14 x 1,5 x 80	DIN 960 5.8, 8.8, 10.9, 12.9	50	3 000
14 x 1,5 x 85	DIN 960 5.8, 8.8, 10.9, 12.9	50	3 000
14 x 1,5 x 90	DIN 960 5.8, 8.8, 10.9, 12.9	50	3 000
14 x 1,5 x 95	DIN 960 5.8, 8.8, 10.9, 12.9	50	3 000
14 x 1,5 x 100	DIN 960 5.8, 8.8, 10.9, 12.9	50	3 000
14 x 1,5 x 105	DIN 960 5.8, 8.8, 10.9, 12.9	25	3 000
14 x 1,5 x 110	DIN 960 5.8, 8.8, 10.9, 12.9	25	3 000
14 x 1,5 x 115	DIN 960 5.8, 8.8, 10.9, 12.9	25	3 000
14 x 1,5 x 120	DIN 960 5.8, 8.8, 10.9, 12.9	25	3 000
14 x 1,5 x 125	DIN 960 5.8, 8.8, 10.9, 12.9	25	3 000
14 x 1,5 x 130	DIN 960 5.8, 8.8, 10.9, 12.9	25	3 000
14 x 1,5 x 140	DIN 960 5.8, 8.8, 10.9, 12.9	25	3 000
16 x 1,5 x 40	DIN 960 5.8, 8.8, 10.9, 12.9	50	2 000
16 x 1,5 x 45	DIN 960 5.8, 8.8, 10.9, 12.9	50	2 000
16 x 1,5 x 50	DIN 960 5.8, 8.8, 10.9, 12.9	50	2 000
16 x 1,5 x 55	DIN 960 5.8, 8.8, 10.9, 12.9	50	2 000
16 x 1,5 x 60	DIN 960 5.8, 8.8, 10.9, 12.9	50	2 000
16 x 1,5 x 65	DIN 960 5.8, 8.8, 10.9, 12.9	50	2 000
16 x 1,5 x 70	DIN 960 5.8, 8.8, 10.9, 12.9	50	2 000
16 x 1,5 x 75	DIN 960 5.8, 8.8, 10.9, 12.9	50	2 000
16 x 1,5 x 80	DIN 960 5.8, 8.8, 10.9, 12.9	50	2 000
16 x 1,5 x 85	DIN 960 5.8, 8.8, 10.9, 12.9	25	2 000
16 x 1,5 x 90	DIN 960 5.8, 8.8, 10.9, 12.9	25	2 000
16 x 1,5 x 95	DIN 960 5.8, 8.8, 10.9, 12.9	25	2 000
16 x 1,5 x 100	DIN 960 5.8, 8.8, 10.9, 12.9	25	2 000
16 x 1,5 x 105	DIN 960 5.8, 8.8, 10.9, 12.9	25	2 000
16 x 1,5 x 110	DIN 960 5.8, 8.8, 10.9, 12.9	25	2 000
16 x 1,5 x 115	DIN 960 5.8, 8.8, 10.9, 12.9	25	2 000
16 x 1,5 x 120	DIN 960 5.8, 8.8, 10.9, 12.9	25	2 000
16 x 1,5 x 125	DIN 960 5.8, 8.8, 10.9, 12.9	25	2 000
16 x 1,5 x 130	DIN 960 5.8, 8.8, 10.9, 12.9	25	2 000
16 x 1,5 x 140	DIN 960 5.8, 8.8, 10.9, 12.9	25	2 000
16 x 1,5 x 150	DIN 960 5.8, 8.8, 10.9, 12.9	25	2 000
16 x 1,5 x 160	DIN 960 5.8, 8.8, 10.9, 12.9	25	2 000
18 x 1,5 x 55	DIN 960 5.8, 8.8, 10.9, 12.9	25	2 000
18 x 1,5 x 60	DIN 960 5.8, 8.8, 10.9, 12.9	25	2 000

18 x 1,5 x 65	DIN 960 5.8, 8.8, 10.9, 12.9	25	2 000
18 x 1,5 x 70	DIN 960 5.8, 8.8, 10.9, 12.9	25	2 000
18 x 1,5 x 75	DIN 960 5.8, 8.8, 10.9, 12.9	25	2 000
18 x 1,5 x 80	DIN 960 5.8, 8.8, 10.9, 12.9	25	2 000
18 x 1,5 x 85	DIN 960 5.8, 8.8, 10.9, 12.9	25	2 000
18 x 1,5 x 90	DIN 960 5.8, 8.8, 10.9, 12.9	25	2 000
18 x 1,5 x 95	DIN 960 5.8, 8.8, 10.9, 12.9	25	2 000
18 x 1,5 x 100	DIN 960 5.8, 8.8, 10.9, 12.9	20	2 000
18 x 1,5 x 105	DIN 960 5.8, 8.8, 10.9, 12.9	20	2 000
18 x 1,5 x 110	DIN 960 5.8, 8.8, 10.9, 12.9	20	2 000
18 x 1,5 x 115	DIN 960 5.8, 8.8, 10.9, 12.9	20	2 000
18 x 1,5 x 120	DIN 960 5.8, 8.8, 10.9, 12.9	10	2 000
18 x 1,5 x 125	DIN 960 5.8, 8.8, 10.9, 12.9	10	2 000
18 x 1,5 x 130	DIN 960 5.8, 8.8, 10.9, 12.9	10	2 000
18 x 1,5 x 140	DIN 960 5.8, 8.8, 10.9, 12.9	10	2 000
20 x 1,5 x 60	DIN 960 5.8, 8.8, 10.9, 12.9	25	2 000
20 x 1,5 x 65	DIN 960 5.8, 8.8, 10.9, 12.9	25	2 000
20 x 1,5 x 70	DIN 960 5.8, 8.8, 10.9, 12.9	25	2 000
20 x 1,5 x 75	DIN 960 5.8, 8.8, 10.9, 12.9	25	2 000
20 x 1,5 x 80	DIN 960 5.8, 8.8, 10.9, 12.9	25	2 000
20 x 1,5 x 85	DIN 960 5.8, 8.8, 10.9, 12.9	20	2 000
20 x 1,5 x 90	DIN 960 5.8, 8.8, 10.9, 12.9	20	2 000
20 x 1,5 x 95	DIN 960 5.8, 8.8, 10.9, 12.9	20	2 000
20 x 1,5 x 100	DIN 960 5.8, 8.8, 10.9, 12.9	20	2 000
20 x 1,5 x 105	DIN 960 5.8, 8.8, 10.9, 12.9	10	2 000
20 x 1,5 x 110	DIN 960 5.8, 8.8, 10.9, 12.9	10	2 000
20 x 1,5 x 115	DIN 960 5.8, 8.8, 10.9, 12.9	10	2 000
20 x 1,5 x 120	DIN 960 5.8, 8.8, 10.9, 12.9	10	2 000
20 x 1,5 x 125	DIN 960 5.8, 8.8, 10.9, 12.9	10	2 000
20 x 1,5 x 130	DIN 960 5.8, 8.8, 10.9, 12.9	10	2 000
20 x 1,5 x 140	DIN 960 5.8, 8.8, 10.9, 12.9	10	2 000
20 x 1,5 x 150	DIN 960 5.8, 8.8, 10.9, 12.9	10	2 000
20 x 1,5 x 160	DIN 960 5.8, 8.8, 10.9, 12.9	10	2 000

DIN 961 (5.8, 8.8, 10.9, 12.9)

Hexagonal bolts with fully threaded body with fine thread



Specifications

d	k	s	e
M 8	5,30	13,00	14,38

M 10	6,40	17,00	18,9
M 12	7,50	19,00	21,1
M 14	8,80	22,00	24,49
M16	10,00	24,00	26,75
M 18	11,50	27,00	30,14
M 20	12,50	30,00	33,53

Packaging

Size	Standard	Pcs/box	MOQ/pcs
8 x 1 x 12	DIN 961 5.8, 8.8, 10.9, 12.9	500	6 000
8 x 1 x 14	DIN 961 5.8, 8.8, 10.9, 12.9	400	6 000
8 x 1 x 18	DIN 961 5.8, 8.8, 10.9, 12.9	400	6 000
8 x 1 x 20	DIN 961 5.8, 8.8, 10.9, 12.9	300	6 000
8 x 1 x 22	DIN 961 5.8, 8.8, 10.9, 12.9	300	6 000
8 x 1 x 25	DIN 961 5.8, 8.8, 10.9, 12.9	300	6 000
8 x 1 x 28	DIN 961 5.8, 8.8, 10.9, 12.9	250	6 000
8 x 1 x 30	DIN 961 5.8, 8.8, 10.9, 12.9	250	6 000
8 x 1 x 35	DIN 961 5.8, 8.8, 10.9, 12.9	200	6 000
8 x 1 x 40	DIN 961 5.8, 8.8, 10.9, 12.9	200	6 000
8 x 1 x 45	DIN 961 5.8, 8.8, 10.9, 12.9	150	6 000
8 x 1 x 50	DIN 961 5.8, 8.8, 10.9, 12.9	150	6 000
8 x 1 x 55	DIN 961 5.8, 8.8, 10.9, 12.9	100	6 000
8 x 1 x 60	DIN 961 5.8, 8.8, 10.9, 12.9	100	6 000
8 x 1 x 65	DIN 961 5.8, 8.8, 10.9, 12.9	200	6 000
8 x 1 x 70	DIN 961 5.8, 8.8, 10.9, 12.9	200	6 000
8 x 1 x 75	DIN 961 5.8, 8.8, 10.9, 12.9	150	6 000
8 x 1 x 80	DIN 961 5.8, 8.8, 10.9, 12.9	150	6 000
10 x 1 x 18	DIN 961 5.8, 8.8, 10.9, 12.9	200	5 000
10 x 1 x 20	DIN 961 5.8, 8.8, 10.9, 12.9	200	5 000
10 x 1 x 22	DIN 961 5.8, 8.8, 10.9, 12.9	150	5 000
10 x 1 x 25	DIN 961 5.8, 8.8, 10.9, 12.9	150	5 000
10 x 1 x 28	DIN 961 5.8, 8.8, 10.9, 12.9	150	5 000
10 x 1 x 30	DIN 961 5.8, 8.8, 10.9, 12.9	150	5 000
10 x 1 x 35	DIN 961 5.8, 8.8, 10.9, 12.9	100	5 000
10 x 1 x 40	DIN 961 5.8, 8.8, 10.9, 12.9	100	5 000
10 x 1 x 45	DIN 961 5.8, 8.8, 10.9, 12.9	100	5 000
10 x 1 x 50	DIN 961 5.8, 8.8, 10.9, 12.9	100	5 000
10 x 1 x 55	DIN 961 5.8, 8.8, 10.9, 12.9	150	5 000
10 x 1 x 60	DIN 961 5.8, 8.8, 10.9, 12.9	150	5 000
10 x 1 x 65	DIN 961 5.8, 8.8, 10.9, 12.9	150	5 000
10 x 1 x 70	DIN 961 5.8, 8.8, 10.9, 12.9	100	5 000
10 x 1 x 75	DIN 961 5.8, 8.8, 10.9, 12.9	100	5 000
10 x 1 x 80	DIN 961 5.8, 8.8, 10.9, 12.9	100	5 000
10 x 1 x 85	DIN 961 5.8, 8.8, 10.9, 12.9	100	5 000
10 x 1,25 x 18	DIN 961 5.8, 8.8, 10.9, 12.9	200	5 000
10 x 1,25 x 20	DIN 961 5.8, 8.8, 10.9, 12.9	200	5 000
10 x 1,25 x 22	DIN 961 5.8, 8.8, 10.9, 12.9	150	5 000
10 x 1,25 x 25	DIN 961 5.8, 8.8, 10.9, 12.9	150	5 000
10 x 1,25 x 28	DIN 961 5.8, 8.8, 10.9, 12.9	150	5 000
10 x 1,25 x 30	DIN 961 5.8, 8.8, 10.9, 12.9	150	5 000

10 x 1,25 x 35	DIN 961 5.8, 8.8, 10.9, 12.9	100	5 000
10 x 1,25 x 40	DIN 961 5.8, 8.8, 10.9, 12.9	100	5 000
10 x 1,25 x 45	DIN 961 5.8, 8.8, 10.9, 12.9	100	5 000
10 x 1,25 x 50	DIN 961 5.8, 8.8, 10.9, 12.9	100	5 000
10 x 1,25 x 55	DIN 961 5.8, 8.8, 10.9, 12.9	150	5 000
10 x 1,25 x 60	DIN 961 5.8, 8.8, 10.9, 12.9	150	5 000
10 x 1,25 x 65	DIN 961 5.8, 8.8, 10.9, 12.9	150	5 000
10 x 1,25 x 70	DIN 961 5.8, 8.8, 10.9, 12.9	100	5 000
10 x 1,25 x 75	DIN 961 5.8, 8.8, 10.9, 12.9	100	5 000
10 x 1,25 x 80	DIN 961 5.8, 8.8, 10.9, 12.9	100	5 000
10 x 1,25 x 85	DIN 961 5.8, 8.8, 10.9, 12.9	100	5 000
12 x 1,25 x 20	DIN 961 5.8, 8.8, 10.9, 12.9	250	3 000
12 x 1,25 x 22	DIN 961 5.8, 8.8, 10.9, 12.9	250	3 000
12 x 1,25 x 25	DIN 961 5.8, 8.8, 10.9, 12.9	250	3 000
12 x 1,25 x 30	DIN 961 5.8, 8.8, 10.9, 12.9	200	3 000
12 x 1,25 x 35	DIN 961 5.8, 8.8, 10.9, 12.9	150	3 000
12 x 1,25 x 40	DIN 961 5.8, 8.8, 10.9, 12.9	150	3 000
12 x 1,25 x 45	DIN 961 5.8, 8.8, 10.9, 12.9	150	3 000
12 x 1,25 x 50	DIN 961 5.8, 8.8, 10.9, 12.9	100	3 000
12 x 1,25 x 55	DIN 961 5.8, 8.8, 10.9, 12.9	100	3 000
12 x 1,25 x 60	DIN 961 5.8, 8.8, 10.9, 12.9	100	3 000
12 x 1,25 x 65	DIN 961 5.8, 8.8, 10.9, 12.9	100	3 000
12 x 1,25 x 70	DIN 961 5.8, 8.8, 10.9, 12.9	80	3 000
12 x 1,25 x 75	DIN 961 5.8, 8.8, 10.9, 12.9	80	3 000
12 x 1,25 x 80	DIN 961 5.8, 8.8, 10.9, 12.9	80	3 000
12 x 1,5 x 20	DIN 961 5.8, 8.8, 10.9, 12.9	250	3 000
12 x 1,5 x 22	DIN 961 5.8, 8.8, 10.9, 12.9	250	3 000
12 x 1,5 x 25	DIN 961 5.8, 8.8, 10.9, 12.9	250	3 000
12 x 1,5 x 30	DIN 961 5.8, 8.8, 10.9, 12.9	200	3 000
12 x 1,5 x 35	DIN 961 5.8, 8.8, 10.9, 12.9	150	3 000
12 x 1,5 x 40	DIN 961 5.8, 8.8, 10.9, 12.9	150	3 000
12 x 1,5 x 45	DIN 961 5.8, 8.8, 10.9, 12.9	150	3 000
12 x 1,5 x 50	DIN 961 5.8, 8.8, 10.9, 12.9	100	3 000
12 x 1,5 x 55	DIN 961 5.8, 8.8, 10.9, 12.9	100	3 000
12 x 1,5 x 60	DIN 961 5.8, 8.8, 10.9, 12.9	100	3 000
12 x 1,5 x 65	DIN 961 5.8, 8.8, 10.9, 12.9	100	3 000
12 x 1,5 x 70	DIN 961 5.8, 8.8, 10.9, 12.9	80	3 000
12 x 1,5 x 75	DIN 961 5.8, 8.8, 10.9, 12.9	80	3 000
12 x 1,5 x 80	DIN 961 5.8, 8.8, 10.9, 12.9	80	3 000
14 x 1,5 x 20	DIN 961 5.8, 8.8, 10.9, 12.9	50	3 000
14 x 1,5 x 22	DIN 961 5.8, 8.8, 10.9, 12.9	50	3 000
14 x 1,5 x 25	DIN 961 5.8, 8.8, 10.9, 12.9	50	3 000
14 x 1,5 x 30	DIN 961 5.8, 8.8, 10.9, 12.9	50	3 000
14 x 1,5 x 35	DIN 961 5.8, 8.8, 10.9, 12.9	50	3 000
14 x 1,5 x 40	DIN 961 5.8, 8.8, 10.9, 12.9	50	3 000
14 x 1,5 x 45	DIN 961 5.8, 8.8, 10.9, 12.9	50	3 000
14 x 1,5 x 50	DIN 961 5.8, 8.8, 10.9, 12.9	50	3 000
14 x 1,5 x 55	DIN 961 5.8, 8.8, 10.9, 12.9	50	3 000
14 x 1,5 x 60	DIN 961 5.8, 8.8, 10.9, 12.9	50	3 000
14 x 1,5 x 65	DIN 961 5.8, 8.8, 10.9, 12.9	50	3 000

14 x 1,5 x 70	DIN 961 5.8, 8.8, 10.9, 12.9	50	3 000
14 x 1,5 x 75	DIN 961 5.8, 8.8, 10.9, 12.9	50	3 000
14 x 1,5 x 80	DIN 961 5.8, 8.8, 10.9, 12.9	50	3 000
16 x 1,5 x 25	DIN 961 5.8, 8.8, 10.9, 12.9	50	2 000
16 x 1,5 x 28	DIN 961 5.8, 8.8, 10.9, 12.9	50	2 000
16 x 1,5 x 30	DIN 961 5.8, 8.8, 10.9, 12.9	50	2 000
16 x 1,5 x 35	DIN 961 5.8, 8.8, 10.9, 12.9	50	2 000
16 x 1,5 x 40	DIN 961 5.8, 8.8, 10.9, 12.9	50	2 000
16 x 1,5 x 45	DIN 961 5.8, 8.8, 10.9, 12.9	50	2 000
16 x 1,5 x 50	DIN 961 5.8, 8.8, 10.9, 12.9	50	2 000
16 x 1,5 x 55	DIN 961 5.8, 8.8, 10.9, 12.9	50	2 000
16 x 1,5 x 60	DIN 961 5.8, 8.8, 10.9, 12.9	50	2 000
16 x 1,5 x 65	DIN 961 5.8, 8.8, 10.9, 12.9	50	2 000
16 x 1,5 x 70	DIN 961 5.8, 8.8, 10.9, 12.9	50	2 000
16 x 1,5 x 75	DIN 961 5.8, 8.8, 10.9, 12.9	50	2 000
16 x 1,5 x 80	DIN 961 5.8, 8.8, 10.9, 12.9	50	2 000
18 x 1,5 x 25	DIN 961 5.8, 8.8, 10.9, 12.9	25	2 000
18 x 1,5 x 28	DIN 961 5.8, 8.8, 10.9, 12.9	25	2 000
18 x 1,5 x 30	DIN 961 5.8, 8.8, 10.9, 12.9	25	2 000
18 x 1,5 x 35	DIN 961 5.8, 8.8, 10.9, 12.9	25	2 000
18 x 1,5 x 40	DIN 961 5.8, 8.8, 10.9, 12.9	25	2 000
18 x 1,5 x 45	DIN 961 5.8, 8.8, 10.9, 12.9	25	2 000
18 x 1,5 x 50	DIN 961 5.8, 8.8, 10.9, 12.9	25	2 000
18 x 1,5 x 55	DIN 961 5.8, 8.8, 10.9, 12.9	25	2 000
18 x 1,5 x 60	DIN 961 5.8, 8.8, 10.9, 12.9	25	2 000
18 x 1,5 x 65	DIN 961 5.8, 8.8, 10.9, 12.9	25	2 000
18 x 1,5 x 70	DIN 961 5.8, 8.8, 10.9, 12.9	25	2 000
18 x 1,5 x 75	DIN 961 5.8, 8.8, 10.9, 12.9	25	2 000
18 x 1,5 x 80	DIN 961 5.8, 8.8, 10.9, 12.9	25	2 000
20 x 1,5 x 25	DIN 961 5.8, 8.8, 10.9, 12.9	25	2 000
20 x 1,5 x 28	DIN 961 5.8, 8.8, 10.9, 12.9	25	2 000
20 x 1,5 x 30	DIN 961 5.8, 8.8, 10.9, 12.9	25	2 000
20 x 1,5 x 35	DIN 961 5.8, 8.8, 10.9, 12.9	25	2 000
20 x 1,5 x 40	DIN 961 5.8, 8.8, 10.9, 12.9	25	2 000
20 x 1,5 x 45	DIN 961 5.8, 8.8, 10.9, 12.9	25	2 000
20 x 1,5 x 50	DIN 961 5.8, 8.8, 10.9, 12.9	25	2 000
20 x 1,5 x 55	DIN 961 5.8, 8.8, 10.9, 12.9	25	2 000
20 x 1,5 x 60	DIN 961 5.8, 8.8, 10.9, 12.9	25	2 000
20 x 1,5 x 65	DIN 961 5.8, 8.8, 10.9, 12.9	25	2 000
20 x 1,5 x 70	DIN 961 5.8, 8.8, 10.9, 12.9	25	2 000
20 x 1,5 x 75	DIN 961 5.8, 8.8, 10.9, 12.9	25	2 000
20 x 1,5 x 80	DIN 961 5.8, 8.8, 10.9, 12.9	25	2 000

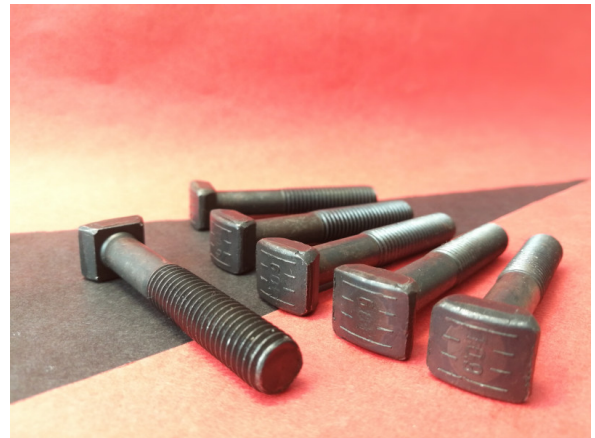
KÖCKERLING - hammer head bolt

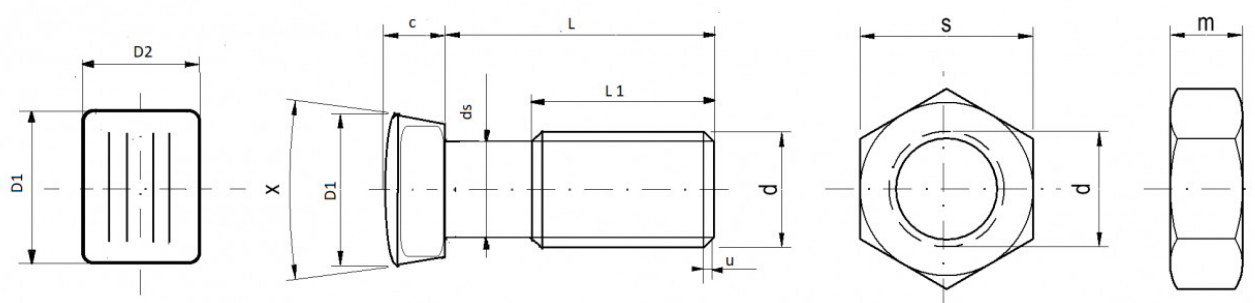
Hammer head bolts 10.9 with nuts DIN 934 (8.8)

THE MOST PARTICULAR USE

The bolts **for machinery of Köckerling**

The most often used OEM **Köckerling 901933**





Specifications

d	c	D1	D2	x	s	m
M 10	7,00	16,00	13,5	55°	17,00	8,00

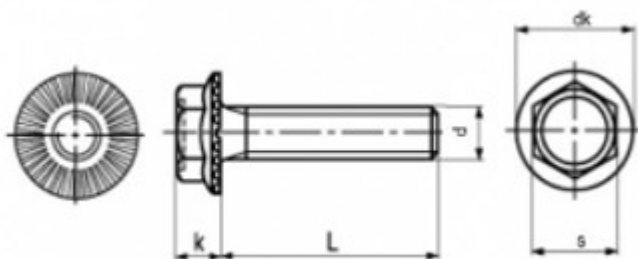
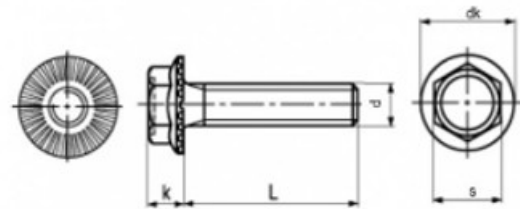
Packaging

		Packaging without nuts	Packaging with nuts
10 x 55	KÖCKERLING 10.9	100	100/100
10 x 60	KÖCKERLING 10.9	150	100/100

Horsch 12 x 20

THE MOST PARTICULAR USE

The bolts to machinery of Horsch.



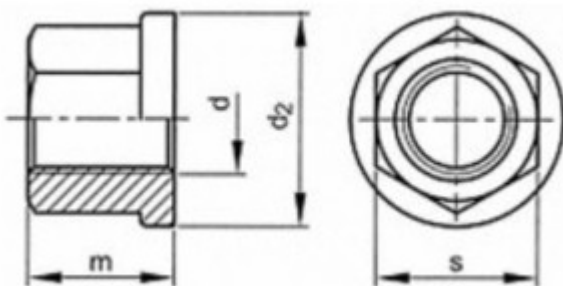
Specifications

d	k	dk	s
M 12	10,00	23,50	17

Packaging

Packed in boxes / pcs		Packing
12 x 20	Horsch 00360414	200

Flange nut M14 Kverneland



Specifications

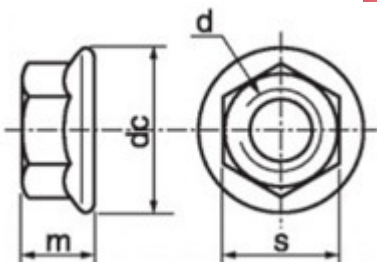
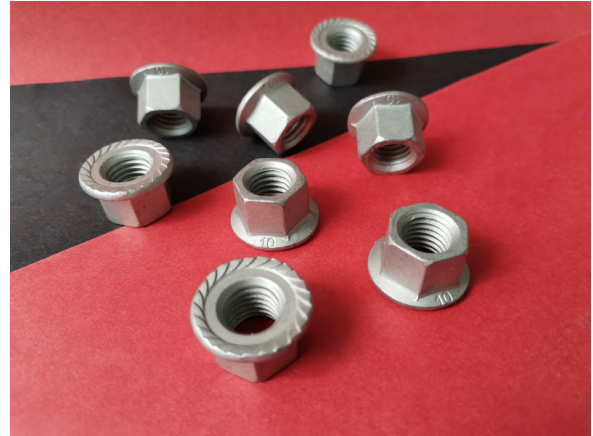
d	d2	m	s
M 14	25,00	12,00	19

Packaging

Packed in boxes		Packaging
-----------------	--	-----------

M14	Nuts /10/ KK016015	100
-----	--------------------	-----

Flange nut M12 Horsch



Specifications

d	dc	m	s
M12	24,00	15,00	17

Packaging

Packed in boxes		Packaging
M12	Nuts /10/ 00360084	150